

# Bonhams



California Jewels

Los Angeles | November 19 and 20, 2018



# California Jewels

Los Angeles | Monday November 19 & Tuesday November 20, 2018, at 10am

## BONHAMS

7601 West Sunset Blvd,  
Los Angeles, CA 90046  
[bonhams.com](http://bonhams.com)

## SALE

**Day 1: November 19**  
Lots: 1 - 245

**Day 2: November 20**  
Lots: 246 - 486

## PREVIEW

### Los Angeles

Thursday November 15,  
12pm to 5pm  
Friday November 16,  
12pm to 5pm  
Saturday November 17,  
12pm to 5pm  
Sunday November 18,  
12pm to 5pm

## SALE NUMBER:

24867

## CATALOG:

\$35.00

## ILLUSTRATIONS

Front cover: Lot 181  
Inside front cover: Lot 52  
Inside back cover: Lot 311, 312  
and 319  
Back cover: Lot 284

## BIDS

+1 (323) 850 7500  
+1 (323) 850 6090 fax  
Email: [bids.us@bonhams.com](mailto:bids.us@bonhams.com)  
To bid via the internet please visit  
[www.bonhams.com](http://www.bonhams.com)

## Telephone bidding

Bidding by telephone will only  
be accepted on a lot with a low  
estimate in excess of \$1000.

Please note that bids should be  
submitted no later than 4pm on  
the day prior to the sale. New  
bidders must also provide proof  
of identity when submitting bids.  
Failure to do this may result in your  
bid not being processed.

## Live online bidding is available for this sale

Please email [bids@bonhams.com](mailto:bids@bonhams.com)  
with 'live bidding' in the subject  
line 48 hours before the auction  
to register for this service.

## INQUIRIES

Jean Ghika, FGA  
Group Jewelry Director  
+44 207 468 8282  
[jean.ghika@bonhams.com](mailto:jean.ghika@bonhams.com)

Caroline Morrissey  
Senior Specialist, US Jewelry  
+1 (212) 644 9046  
[caroline.morrissey@bonhams.com](mailto:caroline.morrissey@bonhams.com)

## Los Angeles:

Dana Ehrman, GG  
Director, LA Jewelry  
Alexis Vourvoulis, GG  
Kelly Sitek, GG  
Emily Waterfall  
Alexandra Schettini  
+1 (323) 436 5424  
[dana.ehrman@bonhams.com](mailto:dana.ehrman@bonhams.com)

## San Francisco:

Shannon Beck, GG  
+1 (415) 503 3306  
[shannon.beck@bonhams.com](mailto:shannon.beck@bonhams.com)

## CLIENT SERVICES

Monday to Friday 9am-5pm  
+1 (323) 850 7500  
+1 (323) 850 6090 Fax

Please see pages 100 to 102 for  
bidder information including  
Conditions of Sale, after-sale  
collection and shipment.

Please note that irrespective  
of origin, jadeite and rubies (and  
any jewelry pieces that contain  
them) may now be imported into  
the United States.

## REGISTRATION IMPORTANT NOTICE

Please note that all customers,  
irrespective of any previous activity  
with Bonhams, are required to  
complete the Bidder Registration  
Form in advance of the sale. The  
form can be found at the back  
of every catalogue and on our  
website at [www.bonhams.com](http://www.bonhams.com)  
and should be returned by email or  
post to the specialist department  
or to the bids department at  
[bids.us@bonhams.com](mailto:bids.us@bonhams.com)

To bid live online and / or  
leave internet bids please go to  
[www.bonhams.com/auctions/24867](http://www.bonhams.com/auctions/24867)  
and click on the Register to bid link  
at the top left of the page.

## Bonhams

220 San Bruno Avenue  
San Francisco, California 94103  
© 2018, Bonhams & Butterfields  
Auctioneers Corp.; All rights reserved.  
Bond No. 57BSBGL0808

## IMPORTANT NAMES & NOTICES

### DIAMONDS, COLORED STONES & PEARLS

The Jewelry department of Bonhams & Butterfields recognizes that there are many various forms of treatments and enhancements used in diamonds and colored stones in order to improve their appearance and or color. Techniques such as heat treatment have been used to improve the color and transparency of both sapphires and rubies in addition to other gemstones. Techniques such as oiling have been used to enhance the clarity of emeralds while dying has been used to effect the color of jade. Techniques such as heat treatment, oiling, resin impregnation, irradiation, color diffusion, dying, fracture filling, and HTHP are just a few off the techniques that are in use today. Prospective buyers are therefore reminded that unless otherwise noted in our catalog description it must be assumed that some form of enhancement may have been used and that such treatment may not always be permanent or detectable and that our estimates have taken such possibilities into account. As a matter of policy, Bonhams & Butterfields endeavors to obtain certificates from recognized gemological laboratories when such certificates are deemed crucial to the authenticity of a gemstone. It is not possible however to gain certificates for all items offered for sale and it is therefore recommended where there is no mention of a certificate that all prospective buyers consult with one of our department specialists prior to purchase of such items.

PLEASE NOTE: A number of laboratories issue certificates that give more detailed descriptions of gemstones, however there may not be consensus between different laboratories on the degrees, or types of treatment for any particular gemstone. Neither is there necessarily consensus between different laboratories, or private appraisers, on the grading of diamonds. All gemstone weights are approximations only and although an independent laboratory grading may be used in the catalog text, we cannot guarantee such gradings.

Images shown may appear smaller or larger than actual size.

Although we endeavor to mention in our descriptions significant defects, needed repairs, absent stones and the like, **WE DO NOT GUARANTEE THAT THE DESCRIPTIONS ARE COMPREHENSIVE.** Please examine all lots carefully. It is the responsibility of the prospective bidder, or his agent, to determine the condition of lots during the preview. Condition reports have been created for most lots in this auction, and are available upon request. Please contact the Jewelry department at least two days prior to the sale date for additional information.

It is the responsibility of the buyer to investigate any applicable restrictions on purchased property and to obtain any export or import licenses and/or certificates as well as any other required documentation before shipping. The buyer's inability to export or import any such items or to do so timely shall not serve as the basis for any cancellation or rescission of the sale or any delay in payment. Prospective buyers who are uncertain as to whether a lot is subject to these restrictions or any other restrictions on importation or exportation are advised to consult with the specialist department in which the property is offered.

### REGULATED SPECIES MATERIALS AND CITES PERMITS

The export of a lot from the United States or import into certain countries may be subject to export or import regulations, licensure and/or other restrictions; in particular, lots containing plant or animal materials such as ivory, rhinoceros horn, tortoiseshell, coral, whalebone or certain types of woods, irrespective of age or value, may require the granting of one or more export or import licenses or certificates, or may be banned from import altogether by some countries. Moreover, the ability to obtain an export license or certificate does not insure the ability to obtain an import license or certificate in another country. Lots that contain such regulated species materials may also not be eligible for exportation or for re-importation into the United States if they are not at least 100 years of age, and, under current law, lots containing African Elephant Ivory may no longer be re-imported into the United States regardless of age. In addition, resales of lots containing certain regulated species materials may be subject to restrictions in some jurisdictions.

Lots noted in the catalog with a **Y** next to the lot number contain one or more such regulated plant or animal materials. **It is the buyer's responsibility to investigate any such restrictions and to obtain any relevant export or import licenses. Please note that this process is governed by local authorities and may take considerable time. Regardless of any delay in the obtaining of an export or import license or certificate or denial of a license's or certificate's issuance, purchased lots shall be paid for in accordance with the Conditions of Sale, and any such delay or denial shall not serve as the basis for cancellation of any sale.** Prospective buyers are advised to obtain information from the relevant regulatory authorities regarding export and import restrictions, requirements, and costs prior to bidding.

Prospective buyers should also check with their local (e.g. state) regulatory authorities regarding any local restrictions and/or permit requirements that may apply with respect to purchases of regulated species materials, including without limitation purchases of items containing elephant ivory or rhino horn. For example, we are advised that New York buyers of any lot containing elephant or mammoth ivory or rhino horn will be responsible for obtaining a New York State permit before taking possession of the lot within New York State, and that the State of New Jersey has banned the import of items containing elephant or marine mammal ivory or rhino horn into that state.

Upon request, Bonhams can refer the purchaser to a third party agent to assist the purchaser in attempting to obtain the appropriate licenses and/or certificates. However, there is no assurance that any necessary licenses or certificates can be obtained. Please contact the Specialist Department for a suggested list of shipping agents prior to placing a bid if you are uncertain as to whether a lot is subject to export/import license or certificate requirements or related restrictions.

### WATCHES

Although we endeavor to mention in our descriptions significant defects, needed repairs, absent stones and the like, **WE DO NOT GUARANTEE THAT THE DESCRIPTIONS ARE COMPREHENSIVE.** Please examine all watches carefully. It is the responsibility of the prospective bidder, or his agent, to determine the condition of watches during the preview. Except as expressly set forth in the Conditions of Sale, all watches are sold "as is". We do not guarantee the accuracy or operation of any watch function such as timekeeping, chronograph, calendar, repeater or register.

We make no judgments as to whether diamond dials or diamond bezels originated at the factory or are later additions.



## INDEX

<u>NAME</u>	<u>LOT NUMBER</u>
A. Roure . . . . .	96
Alexandre Reza, French . . . . .	394
Barry Kieselstein Cord . . . . .	70
Bhami . . . . .	418
Boucheron . . . . .	143
Brock & Co. . . . .	341
Bueche-Girod . . . . .	79, 154
Bulgari . . . . .	145, 148, 277, 428
C.D. Peacock . . . . .	192
Cartier . . . . .	19, 22, 31, 42, 76, 80, 83, 101, 146, 149, 151, 152, 241, 281, 282
Chaumet, French . . . . .	69
Chopard . . . . .	18, 403, 442
David WEBB . . . . .	56, 91, 315
Diana Vincent . . . . .	213, 427
Elizabeth Locke . . . . .	337
Elsa Peretti for Tiffany & Co. . . . .	94
Fochtman . . . . .	57
Fope . . . . .	426
Fred Leighton . . . . .	451
Geoffrey Rowlandson . . . . .	92
Gumps . . . . .	54, 297
Hammerman Brothers . . . . .	163, 170, 174
Harry Winston . . . . .	280
Ilias LaLaounis . . . . .	37
Jean Vitau . . . . .	446
John Rubel . . . . .	347
Leo Pizzo . . . . .	29
Lugano . . . . .	202
Marchak . . . . .	296
Mario Buccellati . . . . .	253
Mark Schnider . . . . .	98
Movado . . . . .	179
Nardi . . . . .	252
Orosa . . . . .	46
Oscar Heyman Brothers . . . . .	260, 270, 274, 275, 304
Paloma Picasso for Tiffany & Co. . . . .	313
Patek Philippe . . . . .	21
Paul Flato . . . . .	144, 219
PAVÉ . . . . .	411
Piaget . . . . .	301, 455
Pomellato . . . . .	32, 220, 373
Repossi . . . . .	302
Retzignac Caracas . . . . .	181, 187
Ruser . . . . .	342, 343
Sajen . . . . .	391
Savransky . . . . .	372, 474
Schlumberger for Tiffany & Co. . . . .	365, 416
Sophia D. . . . .	468
Tabbah . . . . .	208
Tiffany & Co. . . . .	52, 78, 120, 264, 273, 278, 279, 350, 386, 408, 484
Van Cleef & Arpels for Asprey . . . . .	45
Van Cleef & Arpels . . . . .	51, 155, 161, 312, 324
Walsler-Wald . . . . .	44
Zorab . . . . .	157

## INCLUDING PROPERTY FROM

Property from the Estate of a Beverly Hills Lady  
 Property from the Estate of a Colorado Artist  
 Property of Mary Chase Comstock  
 Property of a Laguna Beach Collection  
 Property of a Los Angeles Estate  
 Property from The Estate of an LA Lady  
 Property from a New York Lady  
 Property of a Lady  
 Property from a California Pioneer Family  
 Property from an Oregon Estate  
 Property of a San Francisco Lady  
 Property from a Private Texas Collection  
 Property from a Private Texas Collection  
 Property from the Estate of Patrick Henry Jr.  
 Property of Lady from La Jolla, CA  
 Property from a Private Texas Collection  
 Property from a Private Texas collection  
 Property from the estate of William and Diana Lewis Powell  
 Property of a New York Collection  
 Property of a Park Avenue Lady  
 Property of a Los Angeles Lady  
 Formerly the Property of Prince Charles of Belgium and Elisabeth of Bavaria, Queen of Belgium  
 Property for a Newport Beach Lady  
 Property from the Estate of Ruth Will  
 Property from the Estate of Mae Sue Talley  
 Property of a Los Angeles Collector  
 Property of a New Mexico Collector





1  
**AN EMERALD, COLORED DIAMOND, DIAMOND AND 18K BI-COLOR GOLD RING**  
 cut-cornered rectangular step-cut emerald weighs: 2.83cts; size: 6 1/4 (yellow diamonds untested for origin of color)

\$2,500 - 3,500

2  
**A PAIR OF MABÉ PEARL, DIAMOND AND 18K BI-COLOR GOLD EAR CLIPS**  
 mabé pearls approximately: 15.0 and 15.5mm; estimated total diamond weight: 1.50cts; dimensions: 1 x 1in.

\$1,000 - 1,500

3  
**A DIAMOND AND BI-COLOR GOLD RING**  
 estimated total diamond weight: 1.80cts; size: 7 3/4

\$2,200 - 2,800

4  
**A PAIR OF BLACK ONYX, DIAMOND AND 14K GOLD EAR CLIPS, TOGETHER WITH A PAIR OF ENAMEL, DIAMOND AND 18K GOLD EAR CLIPS**  
 estimated total diamond weight: 2.25cts; dimensions: 1 1/8 x 3/4in. and 1 1/8 x 7/8in.

\$1,000 - 1,500  
 To be sold without reserve

5  
**A DIAMOND AND 14K BI-COLOR GOLD NECKLACE**  
 estimated total diamond weight: 2.30cts; gross weight approximately: 47 grams; length: 18 1/4in.

\$2,000 - 3,000

6  
**A DIAMOND, BLACK ONYX AND 18K GOLD HINGED CUFF**  
 estimated total diamond weight: 1.00ct; diameter: 2 1/2in.

\$1,200 - 1,800



7

8



9



10



11

7  
**AN EMERALD, DIAMOND AND 18K BI-COLOR GOLD RING**

oval brilliant-cut emerald approximately: 13.27 x 10.03 x 7.03mm; estimated total diamond weight: 1.70cts; size: 8 1/2

**\$1,000 - 1,500**  
To be sold without reserve

8  
**AN EMERALD, DIAMOND AND 18K GOLD NECKLACE**

estimated total diamond weight: 1.00ct; gross weight approximately: 99 grams; length: 16 1/2in.

**\$3,000 - 5,000**

9  
**A PAIR OF MABÉ PEARL AND 18K GOLD EAR CLIPS, TOGETHER WITH A PAIR OF BLACK ONYX AND 14K BI-COLOR GOLD EAR CLIPS**

mabé pearls approximately: 17.1 to 17.2mm; dimensions: 1 x 1in. and 2 1/2 x 1 1/4in.

**\$1,000 - 1,500**  
To be sold without reserve

10  
**A DIAMOND AND 18K GOLD BRACELET, ITALIAN**

estimated total diamond weight: 1.25cts; diameter: 2 3/8in.

**\$1,200 - 1,800**

11  
**A DIAMOND AND 18K GOLD BRACELET WRISTWATCH**

mechanical movement, gross weight approximately 52.8 grams; case width: 22mm

**\$1,500 - 2,000**



12



13



15



14



16



12  
**A GEM-SET 14K GOLD PENDANT  
 NECKLACE AND EAR CLIPS**

necklace length: 20in., ear clip dimensions: 1  
 3/4 x 7/8in.

**\$1,000 - 1,500**  
 To be sold without reserve

13  
**A PAIR OF DIAMOND AND 18K GOLD  
 EAR CLIPS**

estimated total diamond weight: 1.25cts;  
 dimensions: 1 x 3/4in.

**\$1,000 - 1,500**  
 To be sold without reserve

14  
**A COLORED DIAMOND, DIAMOND AND  
 18K GOLD RING**

octagonal modified brilliant-cut brown  
 diamond approximately: 1.65cts; signed  
 DBS; estimated remaining diamond weight:  
 2.20cts; size: 7 (brown diamond untested for  
 origin of color)

**\$2,500 - 3,500**

15  
**A DIAMOND AND GEM-SET 18K GOLD  
 HINGED CUFF AND RING**

gross weight approximately: 62 grams; cuff  
 diameter: 2 1/4in, ring size: 5

**\$1,200 - 1,800**

16  
**AN 18K GOLD AND 9K WHITE GOLD  
 BRACELET**

weighing approximately: 63 grams; length: 7  
 1/2in, width: 3/4in.

**\$1,200 - 1,800**





17



18



20



19



21

17  
**A 14K GOLD NECKLACE AND EAR CLIP SET**

*weighing approximately: 103 grams; necklace length: 17in., ear clip dimensions: 1 x 5/8in.*

**\$1,500 - 2,000**

18  
**A DIAMOND AND 18K GOLD 'HAPPY SPIRIT' NECKLACE, CHOPARD**  
*signed Chopard, no. 8020667; length: 18in.*

**\$2,000 - 3,000**

19  
**A PAIR OF 18K GOLD HEART HOOP EARRINGS, CARTIER**  
*signed Cartier; no. D51226; weighing approximately: 30 grams; diameter: 1 x 1/2in.*

**\$2,000 - 3,000**

20  
**A 14K GOLD CONCEALED DIAL BRACELET WRISTWATCH**  
*mechanical movement, gross weight approximately 73 grams; length: 7 1/4in; case width: 23mm*

**\$1,000 - 1,500**

**PROPERTY FROM A NEWPORT BEACH LADY**

21  
**A DIAMOND AND 18K GOLD 'GOLDEN ELLIPSE' INTEGRAL BRACELET WRISTWATCH, PATEK PHILIPPE, 1990**  
*quartz movement; signed case, dial, movement and clasp; no. 4698; with signed box; case width: 20mm; length: 7in.*

**\$3,000 - 5,000**



**PROPERTY OF VARIOUS OWNERS**

22  
**A DIAMOND AND 18K GOLD ‘BAMBOO’ RING, CARTIER, FRENCH**

*signed Cartier, no. 734414; French assay marks; estimated total diamond weight: 1.10cts; size: 4 3/4*

**\$2,000 - 3,000**

23  
**A PAIR OF DIAMOND AND BI-COLOR GOLD EAR CLIPS**

*estimated total diamond weight: 2.50cts; dimensions: 3/4 x 1/2in.*

**\$1,500 - 2,000**

24  
**A DIAMOND, PLATINUM AND 18K GOLD RING**

*marquise brilliant-cut diamond approximately: 1.00ct; size: 6 1/2*

**\$3,000 - 5,000**

25  
**A DIAMOND, SILVER AND 18K GOLD HINGED BANGLE**

*estimated total diamond weight: 1.55cts; gross weight approximately: 33 grams; diameter: 2 1/4in.*

**\$1,500 - 2,500**

26  
**A GREEN TOURMALINE, DIAMOND AND 18K BI-COLOR GOLD COLLAR**

*with maker’s mark; estimated total diamond weight: 1.10cts; gross weight approximately: 64 grams; length: 17 1/2in.*

**\$3,000 - 5,000**

27  
**A DIAMOND AND 18K BI-COLOR GOLD RING**

*estimated total diamond weight: 1.00ct; size: 7*

**\$1,500 - 2,500**



28



30



29



31



32

28  
**TWO PAIRS OF 18K GOLD EAR CLIPS**  
*weighing approximately: 46 grams;  
dimensions: 1 1/4 x 1/2in. and 7/8 x 7/8in.*

**\$1,000 - 1,500**

29  
**A DIAMOND AND 18K BI-COLOR GOLD RING, LEO PIZZO, ITALIAN**  
*signed LeoPizzo, with Italian assay marks;  
estimated total diamond weight: 1.90cts;  
size: 5 1/4*

**\$1,200 - 1,800**

30  
**A DYED GREEN CHALCEDONY AND 18K GOLD HINGED BANGLE AND RING SET**  
*gross weight approximately: 80 grams;  
bangle diameter: 2 1/2in., width: 7/8in.; ring  
size: 7 1/2*

**\$1,500 - 2,000**

31  
**A DIAMOND AND 14K GOLD BAND, CARTIER**  
*signed Cartier; size: 9*

**\$2,500 - 3,500**

32  
**A DIAMOND AND 18K BI-COLOR GOLD BRACELET, POMELLATO**  
*signed Pomellato; estimated total diamond  
weight: 1.80cts; gross weight approximately:  
72 grams; length: 7 1/2in.*

**\$5,000 - 8,000**



33

34

**PROPERTY FROM AN OREGON ESTATE**

33  
**A DIAMOND AND GEM-SET 18K GOLD CLIP, TOGETHER WITH A LAPIS LAZULI AND 18K GOLD BASE/STAND, ITALIAN**  
*clip gross weight approximately: 47 grams; clip dimensions: 2 3/4 x 1 3/4in., base dimensions: 2 x 1 3/4 x 1in.*

**\$2,000 - 3,000**

34  
**AN 18K GOLD FRINGE NECKLACE**  
*weighing approximately: 47 grams; length: 18in.*

**\$1,500 - 2,500**

35  
**AN AMETHYST, DIAMOND AND 14K GOLD RING**  
*cut-cornered rectangular step-cut amethyst approximately: 25.80 x 21.20 x 13.53mm; size: 5 3/4*

**\$1,000 - 1,500**  
**To be sold without reserve**

**PROPERTY OF ANOTHER OWNER**

36  
**A TSAVORITE GARNET, RUBY AND 18K GOLD HINGED PHARAOH BANGLE**  
*gross weight approximately: 143 grams; diameter: 2 1/4in., width: 7/8 to 4in.*

**\$4,000 - 6,000**

**PROPERTY FROM AN OREGON ESTATE**

37  
**A DIAMOND AND GEM-SET 18K BI-COLOR GOLD LARIAT NECKLACE, ILIAS LALAOUNIS**  
*signed Lalaounis, with maker's mark; gross weight approximately: 164 grams; length: 31in.*

**\$6,000 - 8,000**

38  
**AN EMERALD, DIAMOND AND BI-COLOR GOLD PHARAOH BROOCH/PENDANT**  
*estimated total diamond weight: 1.25cts; gross weight approximately: 106 grams; dimensions: 3 1/4 x 3in.*

**\$3,000 - 5,000**

39  
**A DIAMOND, ENAMEL AND GEM-SET GOLD BRACELET**  
*length: 7in., width: 1 5/8in.*

**\$3,000 - 5,000**





35



36



37



38



39



40



41



42



43

40

**A SMOKY QUARTZ AND GOLD NECKLACE**

cut-cornered rectangular step-cut smoky quartz approximately: 16.15 x 14.28 x 9.80mm to 28.30 x 25.40 x 22.22mm; length: 19in.

**\$1,000 - 1,500**  
To be sold without reserve

41

**A BI-COLOR GOLD BRACELET**

with maker's mark; weighing approximately: 75 grams; length: 6 3/4in.

**\$1,200 - 1,800**

42

**A RUBY, DIAMOND AND 18K GOLD CLIP, CARTIER**

signed Cartier, no. 20176; estimated total diamond weight: 1.00ct; gross weight approximately: 29 grams; dimensions: 1 3/4 x 1 1/4in.

**\$2,500 - 3,500**

43

**A RETRO CITRINE, DIAMOND, RUBY AND 14K GOLD RING, CIRCA 1945**

oval mixed-cut citrine approximately: 29.00 x 20.80 x 12.90mm; size: 5

**\$1,000 - 1,500**  
To be sold without reserve

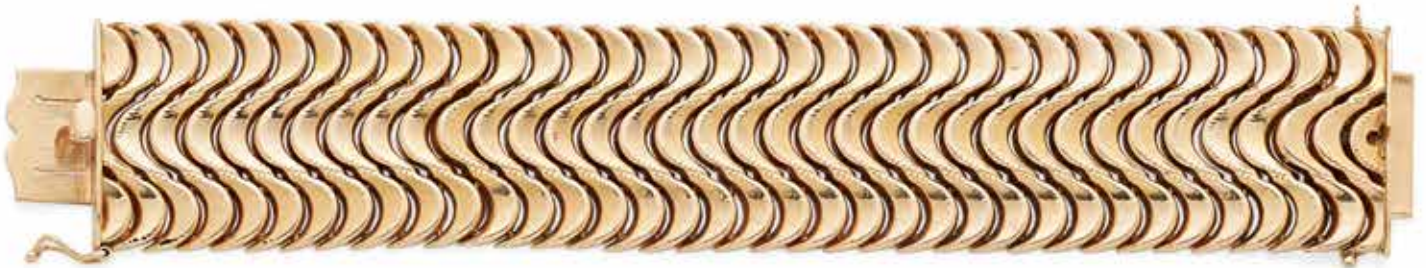




44



45



46

44  
**A RETRO ROCK CRYSTAL QUARTZ AND  
 18K ROSE GOLD CLIP, WALSER-WALD,  
 CIRCA 1940**

cushion mixed-cut rock crystal quartz  
 approximately: 41.50 x 33.00 x 25.00mm;  
 signed *Walser Wald*; dimensions: 2 1/2 x 2in.

**\$1,000 - 1,500**  
 To be sold without reserve

45  
**AN EMERALD AND ROSE GOLD  
 STYPTOR MINAUDIERE, VAN CLEEF &  
 ARPELS FOR ASPREY, CIRCA 1950**

signed *La minaudiere de Vanclief and Arpels*,  
 made for *Asprey*, no. 2781, no. 49543, no.  
 49542; dimensions: 6 1/4 x 5 x 5/8in.

**\$1,800 - 2,500**

46  
**AN 18K ROSE GOLD BRACELET, OROSA**  
 signed *Orosa*; gross weight approximately:  
 66 grams; length: 6 5/8in.

**\$2,000 - 3,000**



47

48

49



50

47

**A CARVED JADEITE JADE, DIAMOND AND 18K BI-COLOR GOLD PENDANT AND 14K GOLD OMEGA COLLAR**

*estimated total diamond weight: 2.00cts; chain length: 18in., pendant dimensions: 5 1/2 x 2in.*

**\$5,000 - 7,000**

Accompanied by Mason Kay report #180803-11889, dated August 3, 2018, stating: Natural Jadeite Jade-No Dye or polymer detected-'A'Jade.

48

**A JADEITE JADE AND GOLD RING**

*oval cabochon jadeite jade approximately: 27.62 x 19.45 x 12.30mm; size: 6*

**\$3,000 - 5,000**

Accompanied by Mason Kay report #180716-4043, dated July 16, 2018, stating: Natural Jadeite Jade-No Dye or polymer detected-'A'Jade.

49

**A LAVENDER JADEITE JADE, DIAMOND AND 14K WHITE GOLD RING**

*oval cabochon lavender jadeite jade approximately: 27.15 x 17.09 x 7.47mm; estimated total diamond weight: 3.20cts; size: 5 3/4*

**\$4,000 - 6,000**

Accompanied by Mason Kay report #180716-2355, dated July 16, 2018, stating: Natural Jadeite Jade-No Dye or polymer detected-'A'Jade.

50<sup>Y</sup>

**A MULTI-STRAND CORAL BEAD, OPAL AND 14K GOLD NECKLACE**

*with detachable clasp/brooch; coral beads approximately: 5.8 to 12.7mm; lengths: 14 1/4in. to 15 1/4in.*

**\$2,000 - 3,000**





51



52



53



54



55



56

**PROPERTY OF VARIOUS OWNERS**

51  
**A DIAMOND AND 18K GOLD RING, VAN CLEEF & ARPELS, NEW YORK**  
*signed VCA, no. NY5K649-1; estimated total diamond weight: 1.95cts; size: 6*

**\$3,500 - 5,000**

52  
**A DIAMOND, ENAMEL, PLATINUM AND GEM-SET 18K GOLD SCARAB BROOCH, TIFFANY & CO., 1993**  
*signed Tiffany & Co.; estimated total diamond weight: 1.35cts; gross weight approximately: 40 grams; dimensions: 1 7/8 x 1 1/2in.*

**\$3,000 - 5,000**

53  
**A DIAMOND, BLACK ONYX AND 18K BI-COLOR GOLD RING**  
*estimated total diamond weight: 3.80cts; size: 6*

**\$2,000 - 3,000**

54  
**A JADEITE JADE, DIAMOND AND BI-COLOR GOLD BRACELET, GUMPS**  
*signed Gumps; gross weight approximately: 68 grams; length: 8in.*

**\$3,000 - 5,000**

See department for Mason Kay report.

55  
**A LAVENDER JADEITE JADE, DIAMOND AND 14K GOLD RING**  
*oval cabochon lavender jadeite jade approximately: 19.13 x 25.23 x 9.16mm; size: 7 1/2*

**\$1,500 - 2,500**

Accompanied by Mason Kay report #180831-1651, dated August 31, 2018, stating: Natural Jadeite Jade-No Dye or polymer detected-'A' Jade.

56  
**A PAIR OF AMETHYST, ENAMEL, AND 18K GOLD EAR CLIPS, DAVID WEBB**  
*oval cabochon amethyst approximately: 19.82 x 15.12 x 11.28mm; signed WEBB; dimensions: 1 1/4 x 1in.*

**\$5,000 - 8,000**



57  
**A PAIR OF CITRINE, DIAMOND AND 18K GOLD EAR CLIPS, FOCHTMANN**  
*with maker's mark; diameter: 3/4in.*

\$1,000 - 1,500

58  
**A PAIR OF 18K GOLD EAR CLIPS**  
*weighing approximately: 44 grams; dimensions: 2 x 1in.*

\$1,000 - 1,500

**PROPERTY FROM THE ESTATE OF MAE SUE TALLEY**

59<sup>Y</sup>  
**A MULTI-STRAND CORAL BEAD, DIAMOND AND GOLD TORSADE**  
*coral beads approximately: 3.5 to 4.2mm; length: 18in.*

\$1,500 - 2,500

60<sup>Y</sup>  
**TWO PAIRS CORAL AND GOLD EAR CLIPS**  
*diameters: 3/4in. and 1in.*

\$1,000 - 1,500  
 To be sold without reserve

**PROPERTY OF VARIOUS OWNERS**

61  
**A PAIR OF 18K GOLD DAY/NIGHT EAR CLIPS**  
*weighing approximately: 45 grams; dimensions: 1 1/2 x 1in.*

\$1,000 - 1,500  
 To be sold without reserve

62  
**AN AMETHYST, CITRINE AND 18K GOLD RING,**  
*size: 8 1/2*

\$1,500 - 2,000

63  
**AN 18K GOLD PENDANT NECKLACE**  
*weighing approximately: 222 grams; length: 29in.*

\$5,000 - 7,000

64<sup>Y</sup>  
**A CORAL BEAD NECKLACE WITH CORAL BEAD STUD EARRINGS**  
*coral beads approximately: 8.2 to 10.5mm; necklace length: 18in.*

\$1,800 - 2,500

65  
**A DIAMOND AND 18K BI-COLOR GOLD RING**  
*estimated total diamond weight: 3.00cts; size: 5*

\$2,000 - 3,000

66  
**AN 18K GOLD BROOCH**  
*weighing approximately: 52 grams; dimensions: 2 1/2 x 2in.*

\$1,200 - 1,800





60



62



63



61



64



65



66



67



68



69



72



70

71



73





67  
**A DIAMOND AND 18K BI-COLOR GOLD DOME RING**  
*estimated total diamond weight: 3.00cts; size: 6*

\$2,000 - 3,000

68  
**A DIAMOND, RUBY, SODALITE AND 18K GOLD HORSE PENDANT, ITALIAN**  
*with maker's mark; diameter: 2 1/2in.*

\$1,000 - 1,500  
 To be sold without reserve

69  
**A DIAMOND AND 18K GOLD BAND, CHAUMET, FRENCH**  
*signed Chaumet, with French assay marks, no. 174999; size: 7*

\$1,500 - 2,000

70  
**AN 18K GOLD HINGED CUFF, BARRY KIESELSTEIN CORD, 1989**  
*signed Kieselstein-Cord, with maker's mark; gross weight approximately: 92 grams; diameter: 2 1/8in.*

\$4,000 - 6,000

71  
**TWO LAPIS LAZULI BEAD AND 14K GOLD NECKLACES**  
*lapis lazuli beads approximately: 10.0 x 15.7mm; lengths: 28in. and 22 1/2in.*

\$2,000 - 3,000

72  
**A PAIR OF DIAMOND AND 18K BI-COLOR GOLD EAR CLIPS**  
*estimated total diamond weight: 1.00ct; dimensions: 1 1/4 x 1/2in.*

\$1,000 - 1,500

73  
**A DIAMOND, ENAMEL AND 18K GOLD FLOWER CLIP, FRENCH**  
*with French assay marks; dimensions: 3 x 1in.*

\$1,000 - 1,500

74  
**A DIAMOND AND 18K GOLD DOME RING**  
*center round brilliant-cut diamond approximately: 1.05cts; estimated total remaining diamond weight: 1.60cts; size: 7 1/2*

\$4,500 - 5,500

75  
**A PAIR OF DIAMOND, PLATINUM AND 18K GOLD EAR CLIPS**  
*estimated total diamond weight: 2.00cts; dimensions: 1 1/4 x 5/8in.*

\$1,500 - 2,500

76  
**AN 18K GOLD COLLAR, CARTIER**  
*signed Cartier; weighing approximately: 118 grams; length: 15in.*

\$5,000 - 7,000

77  
**A DIAMOND AND 18K GOLD DOME RING**  
*estimated total diamond weight: 3.00cts; size: 6*

\$2,000 - 3,000



78



79



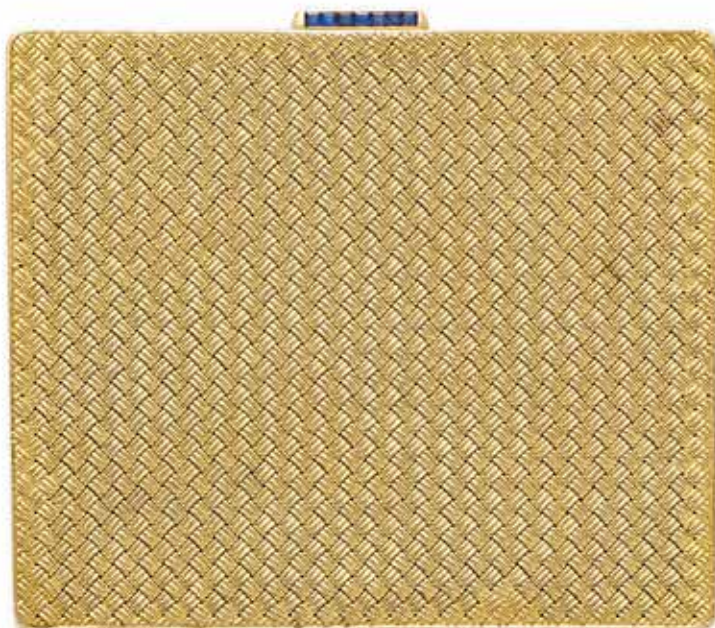
80



81



82



83

**PROPERTY FROM THE ESTATE OF A BEVERLY HILLS LADY**

**78  
A 14K GOLD SAGITTARIUS PENDANT,  
TIFFANY & CO.**

suspended on a gold chain; signed *Tiffany & Co.*; weighing approximately: 31 grams; length: 3 1/2 in.

**\$800 - 1,200**  
To be sold without reserve

**79  
A DIAMOND AND 18K GOLD INTEGRAL  
BRACELET WRISTWATCH WITH  
HARDSTONE DIAL, BUCHE-GIROD**

mechanical movement; case and dial signed, case no. MG 9982 81961; gross weight approximately: 59.8 grams; case width: 23mm; length: 7 3/4 in.

**\$2,000 - 3,000**

**80  
A DIAMOND, 18K GOLD AND PLATINUM  
BAND, CARTIER, FRENCH**

signed *Cartier*, no. 97180; with French assay marks; size: 4 3/4

**\$3,000 - 5,000**

**81  
A PAIR OF GOLD LEAF EAR CLIPS,  
ATTRIBUTED TO BUCCELLATI**

no. 14759; dimensions: 7/8 x 1 in.

**\$1,500 - 2,000**

**82  
A RUBY, TURQUOISE AND GOLD CUFF**  
gross weight approximately: 48 grams;  
diameter: 2 1/4 in.

**\$1,200 - 1,800**

**83  
A SAPPHIRE AND 18K GOLD  
CIGARETTE BOX, CARTIER**  
signed *Cartier*; with signed black sleeve;  
gross weight approximately: 106 grams;  
dimensions: 3 5/8 x 3 x 1/4 in.

**\$4,000 - 6,000**



84



86



88



85



87



89

**84  
A PAIR OF DIAMOND AND PLATINUM  
DRESS CLIPS, CIRCA 1950**

*estimated total diamond weight: 6.10cts;  
dimensions: 1 3/4 x 1in.*

**\$3,500 - 5,000**

**85  
A DIAMOND AND 18K GOLD RING**  
*estimated total diamond weight: 2.95cts;  
size: 6 3/4*

**\$2,500 - 3,500**

**86  
A DIAMOND AND GOLD SUITE**  
*comprising a brooch, ring and ear clips;  
estimated total diamond weight: 9.95cts;  
gross weight approximately: 28 grams;  
brooch diameter: 1 1/4in., ear clip diameter:  
1/2in., ring size: 6*

**\$3,500 - 5,000**

**87  
A DIAMOND AND GOLD ETERNITY  
BAND**  
*estimated total diamond weight: 5.00cts;  
size: 6*

**\$3,000 - 4,000**

**88  
A DOUBLE STRAND CULTURED PEARL  
NECKLACE WITH A DIAMOND AND  
WHITE GOLD CLASP**  
*pearls approximately: 8.3 to 8.8mm; length:  
16in. and 17in.*

**\$1,500 - 2,000**

**89  
A SAPPHIRE, DIAMOND AND 18K GOLD  
BRACELET**  
*estimated total diamond weight: 2.75cts;  
gross weight approximately: 74 grams;  
length: 7in.*

**\$4,000 - 6,000**





**PROPERTY OF VARIOUS OWNERS**

90  
**A CULTURED PEARL, DIAMOND AND PLATINUM RING**  
 pearl approximately: 12.6mm; *estimated total diamond weight: 1.60cts; size: 5 1/4*

\$1,500 - 2,000

91  
**A MULTI-STRAND KESHI PEARL, ROCK CRYSTAL QUARTZ, DIAMOND, 14K WHITE GOLD AND PLATINUM TORSADE, DAVID WEBB**  
*signed WEBB; length: 23in.*

\$2,000 - 3,000

92  
**A BAROQUE FRESHWATER PEARL, COLORED FRESHWATER PEARL, DIAMOND AND 18K BI-COLOR GOLD 'LAST OF THE MOCHICANS' CLIP, GEOFFREY ROWLANDSON**  
*signed Rowlandson, no.GB049, with English hallmarks; dimensions: 2 5/8 x 1 1/4in. (pearls untested for origin of color)*

\$1,500 - 2,500

93  
**A DIAMOND AND PLATINUM RING**  
 round brilliant-cut diamond approximately: 1.55cts; *size: 10*

\$3,000 - 5,000

94  
**A DIAMOND AND PLATINUM RING, ELSA PERETTI FOR TIFFANY & CO.**  
*signed Peretti and Tiffany & Co.; with signed box; size: 7*

\$1,000 - 1,500  
 To be sold without reserve

95  
**A COLORED CULTURED PEARL, CULTURED PEARL, DIAMOND AND 14K WHITE GOLD NECKLACE**  
 pearls approximately: 10.4 to 14.3mm; *length: 34in. (pearls untested for origin of color)*

\$6,000 - 9,000

96  
**A DIAMOND AND 18K WHITE GOLD RING, A. ROURE**  
*signed A. Roure; total diamond weight: 2.05cts; size: 6 3/4*

\$1,200 - 1,800  
 To be sold without reserve

97  
**A PAIR OF COLORED CULTURED PEARL AND 18K BI-COLOR GOLD EAR CLIPS**  
 pearls approximately: 13.0mm; *gross weight approximately: 30 grams; length: 3/4in. (pearls untested for origin of color)*

\$1,500 - 2,000  
 To be sold without reserve

98  
**A GARNET, DIAMOND, COLORED DIAMOND AND PLATINUM RING, MARK SCHNIDER**  
*signed MS; gross weight approximately: 27 grams; size: 8 1/2 (yellow diamonds untested for origin of color)*

\$2,500 - 3,500



92



93



94



95



97



96



98



101



99



100



102



103



104

99

**A JADEITE JADE, DIAMOND AND PLATINUM RING**

oval double cabochon jadeite jade approximately: 17.64 x 14.08 x 8.52mm; size: 6

**\$1,800 - 2,500**

100

**A LOOSE DIAMOND**

round transitional-cut diamond weighs: 4.33cts

**\$18,000 - 22,000**

101

**A DIAMOND AND 18K WHITE GOLD NECKLACE, CARTIER**

signed Cartier, no. 965573; estimated total diamond weight: 2.05cts; gross weight approximately: 75 grams; length: 16in.

**\$9,000 - 12,000**

102

**A DIAMOND AND 18K WHITE GOLD RING**

heart brilliant-cut diamond weighs: 2.10cts; size: 6 1/2

**\$2,500 - 3,500**

103

**A DIAMOND AND PLATINUM RING**

total diamond weight: 3.50cts; size: 7 3/4

**\$2,500 - 3,500**

104

**A DIAMOND AND 18K WHITE GOLD BRACELET**

total diamond weight: 3.45cts; gross weight approximately: 38 grams; length: 7 1/4in.

**\$4,000 - 6,000**





105



106



107



108



109



110

105

**A JADEITE JADE, DIAMOND AND PLATINUM RING**

oval double cabochon jadeite jade approximately: 8.70 x 13.15 x 5.23mm; size: 5 3/4

**\$1,000 - 1,500**  
To be sold without reserve

Accompanied by Mason Kay report #180831-533, dated August 31, 2018, stating: Natural Jadeite Jade-No Dye or polymer detected-'A'Jade.

106

**A PAIR OF JADEITE JADE, DIAMOND AND 18K GOLD EAR CLIPS**

length: 7/8in.

**\$2,000 - 3,000**

107

**A JADEITE JADE, DIAMOND AND 14K WHITE GOLD RING**

oval cabochon jadeite jade approximately: 16.92 x 11.77 x 4.97mm; estimated total diamond weight: 1.05cts; size: 6 1/2

**\$1,500 - 2,000**

Accompanied by GIA report #2191388350 dated May 24, 2018, stating the jadeite jade as: Natural, no indication of impregnation.

**PROPERTY FROM THE ESTATE OF RUTH WILL**

108

**A DIAMOND, WHITE GOLD AND PLATINUM NECKLACE**

pear brilliant-cut diamond approximately: 1.02cts; estimated total remaining diamond weight: 7.75cts; length: 19 1/4in.

**\$6,000 - 8,000**

**PROPERTY OF VARIOUS OWNERS**

109

**A JADEITE JADE AND WHITE GOLD BROOCH**

dimensions: 3 3/16 x 7/8in.

**\$1,800 - 2,500**

Accompanied by Mason Kay report #180807-3011, dated August 7, 2018, stating: Natural Jadeite Jade-No Dye or polymer detected-'A'Jade.

110

**A DIAMOND AND 14K WHITE GOLD BRACELET**

estimated total diamond weight: 4.25cts; gross weight approximately: 34 grams; length: 7 1/2in.

**\$2,500 - 3,500**



111  
**A SET OF THREE DIAMOND AND PLATINUM ETERNITY BANDS**  
*estimated total diamond weight: 2.20cts; sizes: 7 1/4 and 7 1/2*  
**\$2,200 - 2,800**

**PROPERTY OF A LADY**

112  
**A SAPPHIRE, DIAMOND AND 18K WHITE GOLD RING**  
*cushion mixed-cut sapphire approximately: 10.43 x 10.21 x 4.74mm; estimated total diamond weight: 1.80cts; size: 7*  
**\$4,000 - 6,000**

**PROPERTY OF VARIOUS OWNERS**  
 113  
**A KUNZITE, DIAMOND AND 14K WHITE GOLD PENDANT ON CHAIN**  
*cushion mixed-cut kunzite approximately: 32.00 x 19.00 x 17.06mm; length: 19 1/2in.*  
**\$2,000 - 4,000**

114  
**A PINK-PURPLE SAPPHIRE, DIAMOND AND 18K WHITE GOLD RING**  
*oval modified brilliant-cut step-cut purple sapphire weighs: 6.94cts; size: 7*  
**\$2,500 - 3,500**  
 Accompanied by GIA report #2185905097 dated December 28, 2017, stating the sapphire as: Pink-Purple, heated.

115  
**A PAIR OF COLORED SAPPHIRE, DIAMOND AND 18K WHITE GOLD EAR PENDANTS**  
*two heart brilliant step-cut pink and purple sapphires weigh: 2.33cts and 2.36cts; length: 1 3/8in.*  
**\$2,000 - 4,000**

Accompanied by GIA report #2145629163 dated May 07, 2012, stating the 2.36ct sapphire as: Natural Pinkish Purple, no indications of heat enhancement.

Accompanied by GIA report #1142724514 dated June 15, 2012, stating the 2.33ct sapphire as: Natural Purplish Pink, no indications of heat enhancement.

116  
**A DIAMOND AND GEM-SET BI-COLOR GOLD BRACELET**  
*length: 7in.*  
**\$3,000 - 5,000**



117



118



120



122



119



121



123

**117  
A PAIR OF DIAMOND AND 18K WHITE GOLD CHANDELIER EARRINGS**

*estimated total diamond weight: 6.00cts; length: 3 3/4in.*

**\$4,500 - 5,500**

**118  
A SAPPHIRE, DIAMOND AND PLATINUM RING**

*oval brilliant-cut step-cut sapphire weighs: 9.96cts; total diamond weight: 1.62cts; size: 6 1/2*

**\$3,000 - 5,000**

*Accompanied by GIA report #5181784212 dated October 11, 2017, stating the sapphire as: Natural, Sri Lankan origin with no indications of heat enhancement.*

**119  
A RUBELLITE, DIAMOND AND PLATINUM RING**

*cushion mixed-cut rubellite weighs: 11.02cts; size: 7 1/4*

**\$3,500 - 4,500**

**120  
A CULTURED PEARL AND 18K WHITE GOLD NECKLACE, TIFFANY & CO.**

*pearls approximately: 7.0 to 7.3mm; signed Tiffany & Co., with signed folder and box; length: 16in.*

**\$1,000 - 1,500  
To be sold without reserve**

**121  
A SAPPHIRE, DIAMOND AND PLATINUM RING**

*oval brilliant step-cut sapphire weighs: 1.83cts; size: 6 1/4*

**\$3,000 - 5,000**

*Accompanied by GIA report #5161530919 dated August 29, 2014, stating the 1.83ct sapphire as: Natural, Kashmir origin, no indications of heat treatment.*

**122  
A TOURMALINE, DIAMOND AND 18K WHITE GOLD RING**

*oval brilliant-cut pink tourmaline weighs: 24.82cts; total diamond weight: 1.96cts; size:6*

**\$3,000 - 5,000**

**123  
A DIAMOND AND PLATINUM BRACELET**  
*total diamond weight: 9.52cts; length: 7 1/4in.*

**\$6,500 - 7,500**





**PROPERTY OF A LADY**

124  
**A RUBY, DIAMOND AND 18K WHITE GOLD RING**  
 centering a cushion brilliant step-cut ruby weighing: 1.02cts; *estimated total diamond weight: 1.45cts; size: 6 1/4*  
**\$3,500 - 5,500**

Accompanied by GIA report #2191560843 dated August 16, 2018, stating the ruby as: Natural, Burmese origin, no indications of heat enhancement.

**PROPERTY OF ANOTHER OWNER**

125  
**A BLUE TOPAZ, DIAMOND AND 14K WHITE GOLD NECKLACE**  
 center pear brilliant-cut blue topaz approximately: 19.76 x 15.16 x 8.64mm; *estimated total diamond weight: 9.00cts; length: 15in.*  
**\$3,000 - 5,000**

**PROPERTY OF A NEW YORK COLLECTION**

126  
**A DIAMOND AND 18K BI-COLOR GOLD CLIP/PENDANT**  
*estimated total diamond weight: 7.85cts; gross weight approximately: 60 grams; dimensions: 2 1/2 x 2 3/8in.*  
**\$5,000 - 8,000**

**PROPERTY OF VARIOUS OWNERS**

127  
**A PAIR OF DIAMOND AND 18K ROSE GOLD EAR CLIPS**  
*total diamond weight: 1.60cts; diameter: 1in.*  
**\$1,500 - 2,000**

128  
**A BAROQUE CULTURED PEARL, DIAMOND, RUBY AND 18K WHITE GOLD SEAHORSE BROOCH**  
 pearl approximately: 20.6 x 12.9mm; *dimensions: 2 1/2 x 1in.*  
**\$2,000 - 3,000**



129

130



131



132



133

**PROPERTY OF A LADY**

129

**A STAR RUBY, DIAMOND, 18K GOLD AND PLATINUM RING**

*estimated total diamond weight: 1.00ct; size: 5 1/4*

**\$4,500 - 6,500**

Accompanied by GIA report #5192560780 dated August 15, 2018, stating the rubies as: Natural, Burmese origin, no indications of heat enhancement.

**PROPERTY OF VARIOUS OWNERS**

130

**A CULTURED PEARL, DIAMOND, AND GEM-SET 18K BI-COLOR GOLD COLLAR**

*pearls approximately: 6.1 to 6.3mm; length: 13in., width: 3/4in.*

**\$3,000 - 5,000**

131

**A SAPPHIRE, DIAMOND AND GOLD PENDANT/BROOCH**

*round brilliant-cut diamond approximately: 1.50cts; estimated total remaining diamond weight: 6.00cts; gross weight approximately: 35 grams; dimensions: 2 x 2in.*

**\$6,000 - 8,000**

132

**A SAPPHIRE, DIAMOND AND GOLD PENDANT**

*oval brilliant-cut sapphire approximately: 12.29 x 8.38 x 5.26mm; estimated total diamond weight: 7.00cts; dimensions: 2 x 1 1/8in.*

**\$5,500 - 7,500**

133

**A DIAMOND AND WHITE GOLD BROOCH WITH GOLD JACKET**

*old European-cut diamond approximately: 1.90cts; estimated remaining diamond weight: 7.25cts; gross weight approximately: 41 grams; dimensions: 2 1/4 x 2in.*

**\$8,000 - 12,000**



134

135

136

138

137

134  
**A PAIR OF DIAMOND AND GEM-SET 18K GOLD EAR CLIPS**  
*estimated total diamond weight: 4.25cts; dimensions: 1 x 1in.*

**\$1,800 - 2,500**

135  
**A DIAMOND AND GEM-SET 18K BI-COLOR GOLD COLLAR**  
*estimated total diamond weight: 8.00cts; gross weight approximately: 217 grams; length: 15in.*

**\$3,000 - 5,000**

136  
**A MABÉ PEARL, DIAMOND AND 18K GOLD RING, TOGETHER WITH A BAROQUE CULTURED PEARL, DIAMOND AND GOLD RING**  
*mabé pearl approximately: 16.6mm; baroque pearl approximately: 12.9 x 15.1mm; estimated total diamond weight: 1.00ct; sizes: 5 and 6 1/2*

**\$1,000 - 1,500**  
**To be sold without reserve**

137  
**A DIAMOND AND 18K GOLD RING**  
*estimated total diamond weight: 1.35cts; size: 6*

**\$2,000 - 3,000**

138  
**TWO PAIRS OF 18K GOLD EAR CLIPS**  
*weighing approximately: 39 grams; dimensions: 1 1/8 x 1/2in. and 1 1/4 x 1in.*

**\$1,000 - 1,500**  
**To be sold without reserve**





139

140

141

142

143

**PROPERTY OF VARIOUS OWNERS**

139

**A PAIR OF DIAMOND AND GOLD EAR CLIPS**

*dimensions: 1 x 1in.*

**\$1,000 - 1,500**

To be sold without reserve

**PROPERTY OF A LAGUNA BEACH COLLECTION**

140

**A CULTURED PEARL, DIAMOND AND 18K GOLD COLLAR**

pearls approximately: 6.7 to 8.7mm;  
*estimated total diamond weight: 10.20cts;*  
*gross weight approximately: 197 grams;*  
*length: 15in.*

**\$8,000 - 12,000**

141

**AN ENAMEL, DIAMOND AND 18K BICOLOR GOLD BROOCH AND EAR CLIP SET**

*gross weight approximately: 51 grams;*  
*brooch dimensions: 1 1/2 x 1 3/4in., ear clip*  
*dimensions: 1 1/4 x 1in.*

**\$1,200 - 1,800**

142

**AN ENAMEL AND GOLD RING, TOGETHER WITH A TIGER'S EYE QUARTZ AND 18K GOLD RING**

*size: 5 and 6 1/2*

**\$1,000 - 1,500**

To be sold without reserve

143

**AN 18K GOLD BRACELET WRISTWATCH, BOUCHERON**

mechanical movement, cabochon sapphire crown, *case is signed, no. 1203255 75959;*  
*gross weight approximately: 81 grams; case width: 42mm; length: 6 1/2in.*

**\$3,000 - 5,000**



144



146



147



145



148

144

**A GOLD MEXICAN COIN AND 18K GOLD LAPEL WATCH, PAUL FLATO**

mechanical movement, skeletonized dial, movement signed *Alfex*, brooch signed *Paul Flato*; gross weight approximately: 39 grams; diameter: 37mm

\$4,000 - 6,000

**PROPERTY FROM A NEW YORK LADY**

145

**AN 18K BI-COLOR GOLD 'TUBOGAS' CUFF WRISTWATCH, BULGARI**

quartz movement, case signed and no. *BB 262T P.54437*, gross weight approximately: 107 grams; case width: 27mm

\$4,000 - 6,000

**PROPERTY OF ANOTHER OWNER**

146

**A STAINLESS STEEL AND GOLD 'SANTOS' BRACELET WRISTWATCH WITH DATE AND MOONPHASE, CARTIER**

quartz movement; case, dial, and movement signed; case no. 119901 01273; case width: 27mm; length: 7in.

\$1,500 - 2,000

**PROPERTY FROM A NEW YORK LADY**

147

**A DOUBLE GOLD COIN PENDANT ON 14K GOLD CHAIN**

comprising an 1881 \$10 Eagle coin and a 1924 \$20 St. Gaudens Double Eagle coin in gold frames; weighing approximately: 108 grams; length: 35in.

\$3,000 - 5,000

148

**AN 18K GOLD AND STAINLESS STEEL BRACELET WRISTWATCH WITH DATE, BULGARI**

quartz movement, case, dial, and movement signed, case no. *BB33 SGD F100428*; case width: 32mm; length: 7in.

\$1,000 - 1,500

To be sold without reserve





149



151



150



152



153

149

**AN 18K GOLD AND STAINLESS STEEL 'SANTOS' BRACELET WRISTWATCH WITH DATE, CARTIER**

quartz movement, case, dial and movement signed, case no. 187901 46954; case width: 31mm; length: 7 1/4in.

**\$1,800 - 2,500**

**PROPERTY OF ANOTHER OWNER**

150

**A COLLECTION OF ENAMEL, 14K AND 18K GOLD CUFFLINKS AND STUDS**

comprising three pairs of cufflinks and three studs; gross weight approximately: 56 grams; lengths: 1in. and 1 1/8in.

**\$1,000 - 1,500**

**PROPERTY FROM A NEW YORK LADY**

151

**AN 18K GOLD AND STAINLESS STEEL 'SANTOS' BRACELET WRISTWATCH, CARTIER**

automatic movement, case, dial and movement signed, case no. 090741820; case width: 28mm; length: 6 1/2in.

**\$1,200 - 1,800**

**To be sold without reserve**

152

**A GILT BRASS AND LACQUER DESK ALARM CLOCK, CARTIER**

quartz movement, case and dial signed, case no. 07851, dimensions: 3in x 3.5in.

**\$800 - 1,200**

**To be sold without reserve**

**PROPERTY OF VARIOUS OWNERS**

153

**A 14K GOLD BI-COLOR ROPE CHAIN, ITALIAN**

weighing approximately: 88 grams; length: 31in.

**\$1,500 - 2,000**





154

154  
**AN 18K GOLD INTEGRAL BRACELET WRISTWATCH, BUCHE-GIROD**  
mechanical movement, case, dial and movement signed, case no. 102474; gross weight approximately: 110 grams; case width: 34mm; length: 8in.

**\$3,000 - 5,000**

155  
**A SAPPHIRE, RUBY, EMERALD, DIAMOND AND BI-COLOR GOLD CLIP, VAN CLEEF AND ARPELS**  
signed VCA, no. 1K54-1; dimensions: 1 1/2 x 1 1/2in.

**\$2,500 - 3,500**



155

156



157



158



159

156  
**AN 18K GOLD NECKLACE**  
weighing approximately: 120 grams; length: 22 3/4in.

**\$3,000 - 5,000**

157  
**A PINK TOURMALINE, DIAMOND AND 18K BI-COLOR GOLD RING, ZORAB**  
oval cabochon pink tourmaline approximately: 12.95 x 10.85 x 6.30mm; signed Zorab; size: 7 1/2

**\$1,000 - 1,500**  
To be sold without reserve

158  
**A RUBELLITE, DIAMOND AND 18K GOLD RING**  
cushion mixed-cut rubellite approximately: 12.44 x 10.92 x 8.08mm; estimated total diamond weight: 1.50cts; size: 6

**\$2,500 - 3,500**

159  
**A SAPPHIRE AND 18K BI-COLOR GOLD BRACELET**  
gross weight approximately: 65 grams; length: 7in.

**\$1,500 - 2,500**



160

161

162

163

164

165

**PROPERTY FROM A PRIVATE TEXAS COLLECTION**

160  
**AN EMERALD, DIAMOND AND 18K GOLD RING**

size: 6 1/2

**\$1,200 - 1,800**

161  
**A DIAMOND AND 18K GOLD 'ALHAMBRA' RING, VAN CLEEF & ARPELS, FRENCH**

signed VCA, no.CU935, with French assay marks; size: 6 1/4

**\$3,000 - 5,000**

162  
**A SAPPHIRE, DIAMOND AND 14K GOLD NECKLACE**

estimated total diamond weight: 3.70cts; length: 16 1/4in.

**\$1,500 - 2,000**

**PROPERTY OF VARIOUS OWNERS**

163  
**A DIAMOND AND GEM-SET 18K GOLD RING, HAMMERMAN BROTHERS**

signed HB; estimated total diamond weight: 1.75cts; size: 3 3/4

**\$2,000 - 3,000**

164  
**A DIAMOND, SAPPHIRE, EMERALD AND 18K GOLD CLIP, FRENCH**

with French assay and maker's mark; estimated total diamond weight: 3.60cts; gross weight approximately: 52 grams; dimensions: 2 1/2 x 2 1/2in.

**\$3,500 - 4,500**

165  
**A DIAMOND, SAPPHIRE AND 18K BICOLOR GOLD CLIP AND EAR CLIP SET**

gross weight approximately: 42 grams; clip diameter: 1 1/4in., ear clip diameter: 3/4in.

**\$1,000 - 1,500**

**To be sold without reserve**



166

167

168

169

170

166

**A PAIR OF DIAMOND, 14K AND 18K GOLD EAR CLIPS**

*dimensions: 7/8 x 3/4in.*

**\$1,000 - 1,500**

**To be sold without reserve**

**PROPERTY OF A PARK AVENUE LADY**

167

**A CULTURED PEARL NECKLACE WITH DIAMOND AND WHITE GOLD CLASP**

*pearls approximately: 8.5 to 9.0mm; estimated total diamond weight: 2.25cts; length: 26in.*

**\$2,000 - 3,000**

**To be sold without reserve**

168

**A DIAMOND AND 18K BI-COLOR GOLD BROOCH AND EAR CLIP SET**

*estimated total diamond weight: 6.75cts; gross weight approximately: 36 grams; brooch dimensions: 1 1/2 x 2in.; earring dimensions: 5/8 x 5/8in.*

**\$3,000 - 5,000**

**To be sold without reserve**

169

**AN EMERALD, DIAMOND AND PLATINUM RING**

*pear brilliant-cut emerald approximately: 14.7 x 8.00 x 4.90mm; estimated total diamond weight: 4.25cts; size: 6 1/4*

**\$3,000 - 5,000**

**PROPERTY OF VARIOUS OWNERS**

170

**A DIAMOND, 18K GOLD AND PLATINUM BRACELET, HAMMERMAN BROTHERS**

*signed HB; estimated total diamond weight: 8.00cts; gross weight approximately: 73 grams; length: 7 3/4in.*

**\$8,000 - 12,000**





171



172



174



173



175



176

171

**A PAIR OF DIAMOND, CULTURED PEARL AND 18K BI-COLOR GOLD DAY/NIGHT EAR CLIPS**

with additional drop attachment; *estimated total diamond weight: 2.00cts; dimensions: 2 x 5/8in.*

**\$1,000 - 1,500**

To be sold without reserve

172

**A DIAMOND AND 18K BI-COLOR GOLD FLOWER CLIP, ITALIAN**

with Italian marks; *dimensions: 2 1/4 x 1 1/4in.*

**\$1,000 - 1,500**

To be sold without reserve

173

**A CULTURED PEARL, DIAMOND AND 18K GOLD RING**

pearl approximately: 12.3mm; *size: 6*

**\$1,000 - 1,500**

174

**A DIAMOND AND 18K BI-COLOR GOLD BRACELET, HAMMERMAN BROTHERS**

*signed HB; estimated total diamond weight: 9.00cts; gross weight approximately: 58 grams; length: 7 1/2in.*

**\$9,000 - 12,000**

175

**A TWO STRAND CULTURED PEARL, WATERMELON TOURMALINE, DIAMOND AND 18K GOLD NECKLACE**

rectangular step-cut watermelon tourmaline approximately: 28.00 x 9.70 x 7.57mm; pearls approximately: 8.0 to 8.5mm; *lengths: 27in. and 28in.*

**\$1,200 - 1,800**

176

**A DIAMOND AND 18K GOLD LINE BRACELET, FRENCH**

*no. 95, with French import and maker's marks; estimated total diamond weight: 3.90cts; gross weight approximately: 28 grams; length: 7 3/4in.*

**\$2,500 - 3,500**



179



177



178



181



180



182

**PROPERTY OF A NEW MEXICO COLLECTOR**

177

**AN EMERALD, DIAMOND AND WHITE GOLD RING**

octagonal step-cut emerald approximately: 9.73 x 8.65 x 6.82mm; size: 4 1/2

**\$5,000 - 8,000**

Accompanied by GIA report #6197420568 dated June 12, 2018, stating the emerald as: Natural, Colombian origin, clarity enhancement (F1).

178

**A PAIR OF DIAMOND AND WHITE GOLD EAR CLIPS**

estimated total diamond weight: 3.95cts; dimensions: 1 x 3/4in.

**\$3,000 - 5,000**

179

**A DIAMOND AND 14K WHITE GOLD INTEGRAL BRACELET WRISTWATCH, MOVADO**

mechanical 17J unadjusted movement; case, dial and movement signed; movement no. 6682; case no. 83788 4A26; case width: 12mm; length: 5 3/4in.

**\$800 - 1,000**

To be sold without reserve

**PROPERTY OF VARIOUS OWNERS**

180

**A DIAMOND AND PLATINUM RING**

estimated total diamond weight: 2.50cts; size: 1 1/2

**\$1,500 - 2,500**

To be sold without reserve

181

**AN AQUAMARINE, DIAMOND AND 18K WHITE GOLD CLIP, RETZIGNAC**

cut-cornered rectangular step-cut aquamarine approximately: 24.27 x 19.94mm; signed Retznag; estimated total diamond weight: 7.00cts; dimensions: 2 3/4 x 2 1/2in.

**\$4,000 - 6,000**

182

**A DIAMOND AND WHITE GOLD BROOCH WITH GOLD JACKET**

estimated total diamond weight: 5.50cts; dimensions: 2 1/2 x 1 1/2in.

**\$4,000 - 6,000**



183



184



185



187



186



188

183

**AN AQUAMARINE, DIAMOND AND 18K WHITE GOLD PENDANT**

cut-cornered rectangular step-cut aquamarine approximately: 21.27 x 15.42 x 9.96mm; dimensions: 1 3/8 x 5/8in.

**\$3,000 - 5,000**

184

**A SAPPHIRE, DIAMOND AND PLATINUM RING**

cushion brilliant-cut sapphire approximately: 5.61 x 4.81 x 2.92mm; size: 6 1/4

**\$1,000 - 1,500**

To be sold without reserve

185

**A PAIR OF DIAMOND AND WHITE GOLD EAR PENDANTS**

estimated total diamond weight: 4.20cts; length: 1 3/8in.

**\$1,800 - 2,500**

186

**A GREEN TOURMALINE, DIAMOND AND WHITE GOLD RING**

round fancy mixed-cut green tourmaline approximately: 14.52 x 14.49 x 10.21mm; estimated total diamond weight: 1.80cts; size: 4 1/4

**\$1,200 - 1,800**

To be sold without reserve

187

**AN EMERALD, DIAMOND AND PLATINUM CLIP, RETZIGNAC**

center round brilliant-cut diamond approximately: 1.70cts; signed Retzignac Caracas; estimated total remaining diamond weight: 6.00cts; dimensions: 2 3/4 x 1 3/4in.

**\$4,000 - 7,000**

188

**AN EMERALD, DIAMOND AND PLATINUM RING**

rectangular step-cut emerald weighs: 6.80cts; estimated total diamond weight: 3.15cts; size: 7 1/4

**\$25,000 - 35,000**

Accompanied by AGL report #1075853 dated June 15, 2016, stating the emerald as: Natural, Zambian origin, minor clarity enhancement.





189  
**A DIAMOND AND PLATINUM BROOCH**  
*estimated total diamond weight: 5.75cts;  
 dimension: 1 1/4 x 1 7/8in.*

**\$2,000 - 3,000**

190  
**A DIAMOND, EMERALD AND PLATINUM RING**  
*center old European-cut diamond  
 approximately: 1.40cts; size: 5*

**\$3,000 - 5,000**

191  
**A DIAMOND AND 14K WHITE GOLD BROOCH**  
*emerald-cut diamond approximately:  
 1.75cts; estimated total remaining diamond  
 weight: 1.75cts; dimensions: 2 1/4 x 1 1/2in.*

**\$3,000 - 5,000**

192  
**AN ART DECO DIAMOND AND PLATINUM BRACELET, C.D. PEACOCK, CIRCA 1930**  
*signed Peacock; estimated total diamond  
 weight: 5.00cts; length: 6 3/4in.*

**\$2,000 - 3,000**

193  
**A DIAMOND AND PLATINUM BRACELET**  
*estimated total diamond weight: 2.75cts;  
 length: 6 3/4in.*

**\$1,500 - 2,500**

194  
**AN ART DECO DIAMOND, EMERALD AND PLATINUM RING, CIRCA 1930**  
*center emerald-cut diamond approximately:  
 1.50cts; size: 7 1/4*

**\$3,000 - 5,000**

195  
**AN ART DECO DIAMOND AND PLATINUM CLIP, CIRCA 1930**  
*estimated total diamond weight: 8.00cts;  
 gross weight approximately: 27 grams;  
 dimensions: 2 1/2 x 2 1/8in.*

**\$2,500 - 3,500**



196



197



198



199



201



200

196  
**AN ART DECO DIAMOND AND PLATINUM BROOCH, CIRCA 1930**  
*estimated total diamond weight: 2.65cts; dimensions: 2 x 3/4in.*

**\$1,000 - 1,500**  
To be sold without reserve

197  
**A PAIR OF DIAMOND AND PLATINUM EAR CLIPS**  
*estimated total diamond weight: 2.50cts; dimensions: 1 1/4 x 3/4in.*

**\$2,000 - 4,000**

198  
**A DIAMOND, EMERALD AND PLATINUM BRACELET**  
*estimated total diamond weight: 4.80cts; length: 6 3/4in.*

**\$4,000 - 6,000**

199  
**AN ART DECO DIAMOND, SYNTHETIC SAPPHIRE AND PLATINUM BRACELET, CIRCA 1930**  
*estimated total diamond weight: 4.80cts; length: 7in.*

**\$2,000 - 4,000**

200  
**A DIAMOND AND PLATINUM RING**  
*estimated total diamond weight: 2.75cts; size: 6*

**\$2,000 - 3,000**

201  
**AN ART DECO SAPPHIRE, DIAMOND AND PLATINUM PENDANT/BROOCH, CIRCA 1930**  
*with maker's mark; estimated total diamond weight: 4.00cts; dimensions: 1 3/4 x 1in.*

**\$3,000 - 5,000**

202



205



204



206



203



202

**A DIAMOND AND 18K WHITE GOLD RING, LUGANO**

old mine brilliant-cut diamond weighs: 2.09cts; signed *Lugano*, no.10145; size: 6

**\$15,000 - 20,000**

Accompanied by GIA report #110209310151 dated October 11, 2017, stating the diamond as: D color and SI1 clarity.

203

**AN AQUAMARINE, DIAMOND AND 18K WHITE GOLD HINGED BANGLE**

estimated total diamond weight: 3.25cts; gross weight approximately: 47 grams; diameter: 2 3/8in.

**\$2,500 - 3,500**

204

**AN AQUAMARINE, DIAMOND AND 18K WHITE GOLD NECKLACE**

estimated total diamond weight: 5.15cts; gross weight approximately: 58 grams; length: 16in.

**\$5,000 - 7,000**

205

**AN AQUAMARINE, DIAMOND AND 18K WHITE GOLD RING**

cut-cornered rectangular step-cut aquamarine approximately: 18.71 x 13.43 x 9.51mm; estimated total diamond weight: 1.10cts; size: 5

**\$1,800 - 2,500**

206

**A PAIR OF DIAMOND AND 18K WHITE GOLD HOOP EARRINGS**

estimated total diamond weight: 5.25cts; diameter: 1 1/2in.

**\$2,000 - 3,000**

207

**A DIAMOND AND WHITE GOLD COIL BANGLE**

pear brilliant-cut diamond weighs: 0.92ct; oval brilliant-cut diamond weighs: 0.87ct; total remaining diamond weight: 2.38cts; gross weight approximately: 28 grams; diameter: 2 1/4in.

**\$3,000 - 5,000**





207



208



209



210



211

212



**PROPERTY OF A LAGUNA BEACH COLLECTION**

208

**A BLUE TOPAZ, DIAMOND AND 18K GOLD RING, TABBAH**

two marquise fancy mixed-cut blue topaz approximately: 19.65 x 11.10 x 6.83mm; signed *Tabbah*; estimated total diamond weight: 1.25cts; size: 6

**\$1,500 - 2,000**

**PROPERTY OF VARIOUS OWNERS**

209

**A DIAMOND AND 18K WHITE GOLD BRACELET WITH KEY CHARM**

length: 7 1/4in.

**\$1,000 - 1,500**  
To be sold without reserve

210

**A DIAMOND AND 18K WHITE GOLD ETERNITY BAND**

estimated total diamond weight: 3.90cts; size: 7

**\$3,000 - 5,000**

211

**A DIAMOND AND 18K WHITE GOLD BANGLE**

estimated total diamond weight: 9.70cts; gross weight approximately: 67 grams; diameter: 2 3/8in., width: 3/4in.

**\$6,000 - 8,000**

212

**A DIAMOND AND 18K WHITE GOLD LONG CHAIN**

total diamond weight: 19.25cts; length: 70in.

**\$10,000 - 15,000**



213



215



214



216



217



213  
**A GARNET, DIAMOND AND 18K ROSE GOLD RING, DIANA VINCENT**

cut-cornered square step-cut garnet approximately: 11.11 x 10.67 x 6.32mm; signed Diana Vincent; size: 4 3/4

\$2,000 - 3,000

214  
**A PAIR OF DIAMOND, 14K ROSE AND WHITE GOLD BANGLES**

total diamond weight: 16.18cts; gross weight approximately: 62 grams; diameter: 2 3/8in.

\$8,000 - 12,000

215  
**A DIAMOND AND 18K WHITE GOLD RING**

estimated total diamond weight: 1.55cts; size: 7 3/4

\$2,000 - 3,000

216  
**A DIAMOND AND ROSE GOLD KNUCKLE RING**

estimated total diamond weight: 1.30cts; sizes: 6 and 7 1/4

\$1,800 - 2,500

217  
**A DIAMOND AND GEM-SET BLACKENED 18K GOLD PANTHER RING**

size: 6 3/4

\$1,500 - 2,500

218  
**A PAIR OF COLORED DIAMOND AND 18K ROSE GOLD EAR PENDANTS**

estimated total diamond weight: 7.80cts; length: 2 3/4in. (brown diamonds untested for origin of color)

\$2,000 - 3,000

219  
**A GILT SILVER 'PHONE CORD' BANGLE, PAUL FLATO, MEXICO CITY**

signed Flato; weight approximately: 95 grams; diameter: 2 1/2in.

\$2,000 - 3,000



218



220



219



221



222



223

220

**A TOPAZ, DIAMOND AND 18K BI-COLOR GOLD 'LULU' BAND, POMELLATO**

*signed Pomellato, no. 8001134, with signed box; size: 4*

**\$5,000 - 7,000**

221

**A PADPARADSCHA SAPPHIRE, DIAMOND AND PLATINUM RING**

*oval modified brilliant-cut Padparadscha sapphire weighs: 3.00cts; estimated total diamond weight: 1.35cts; size: 6*

**\$15,000 - 20,000**

Accompanied by GRS report #GRS2018-019654, dated January 26, 2018, stating the sapphire as Natural Padparadscha, Madagascar origin, no indications of heat treatment.

222

**A RUBY, DIAMOND AND WHITE GOLD RING**

*marquise brilliant-cut ruby approximately: 11.37 x 4.73 x 2.67mm; estimated total diamond weight: 1.00ct; size: 5*

**\$3,000 - 5,000**

**To be sold without reserve**

223

**A COLORED DIAMOND AND 18K BI-COLOR GOLD LONG CHAIN**

*total diamond weight: 13.83cts; length: 57in. (some yellow and brown diamonds untested for origin of color)*

**\$5,000 - 8,000**

Accompanied by GIA report #218537786 dated May 12, 2017, stating the 1.23ct diamond as: Natural Fancy Dark Orangy-Brown.

Accompanied by GIA report #2171189305 dated June 18, 2015, stating the 1.01ct diamond as: Natural Fancy Dark Brown Greenish-Yellow.





224



228



225



226



227

229

**PROPERTY OF A LOS ANGELES ESTATE**

224  
**A DIAMOND AND 18K GOLD 'EN TREMBLANT' BROOCH, FRENCH**  
*signed Made in France; with maker's and French assay marks; estimated total diamond weight 1.35cts; dimensions: 2 1/2 x 1 1/2in.*

**\$1,800 - 2,500**

225  
**A DIAMOND AND PLATINUM BAND**  
*estimated total diamond weight: 2.10cts; size: 6*

**\$3,000 - 5,000**

226  
**A DIAMOND, ENAMEL AND 18K BI-COLOR GOLD ROOSTER BROOCH, ITALIAN**  
*signed Italy; estimated diamond weight: 1.45cts; gross weight approximately: 29 grams; dimensions: 2 1/4 x 2 1/2in.*

**\$1,200 - 1,800**

227  
**A DIAMOND AND PLATINUM BAND**  
*estimated total diamond weight: 2.00cts; size: 5 1/4*

**\$2,500 - 3,500**

228  
**A PAIR OF DIAMOND AND 14K GOLD BANGLES**  
*estimated diamond weight: 2.70cts; gross weight approximately: 31 grams; diameter: 2 1/2in.*

**\$2,000 - 3,000**

229  
**A DIAMOND AND GOLD BRACELET, FRENCH**  
*with French assay marks; estimated diamond weight: 1.50cts; gross weight approximately: 45 grams; length: 6 1/4in.*

**\$2,000 - 3,000**



230



232



231



233



234



235

**PROPERTY FROM THE ESTATE OF AN LOS ANGELES LADY**

230

**A PAIR OF DIAMOND AND PLATINUM EAR CLIPS**

*with box; estimated total diamond weight: 3.35cts; dimensions: 1 3/8 x 7/8in.*

**\$2,500 - 3,500**

**PROPERTY OF A LOS ANGELES ESTATE**

231

**A DIAMOND, TURQUOISE, CULTURED PEARL, 18K GOLD AND PLATINUM BROOCH**

*dimensions: 2 x 1 7/8in.*

**\$1,000 - 1,500**

**PROPERTY FROM THE ESTATE OF AN LOS ANGELES LADY**

232

**A DIAMOND AND PLATINUM BROOCH**

*with box; estimated total diamond weight: 8.45cts; dimensions: 2 1/16 x 1 1/2in.*

**\$4,000 - 6,000**

**PROPERTY OF A LOS ANGELES ESTATE**

233

**A DIAMOND AND PLATINUM BROOCH**

*estimated total diamond weight 6.25cts; dimensions: 2 3/8 x 1 3/8in.*

**\$3,000 - 5,000**

234

**A DIAMOND, PLATINUM AND METAL RING**

*center old European-cut diamond approximately: 1.50cts; size: 5*

**\$3,000 - 5,000**

235

**A CULTURED PEARL, DIAMOND AND PLATINUM BRACELET**

*pearls approximately: 7.0 to 7.4mm; estimated diamond weight: 2.20cts; length: 6 1/2in.*

**\$2,000 - 3,000**



236

**PROPERTY OF VARIOUS OWNERS**

236<sup>Y</sup>

**A EARLY 19TH CENTURY CORAL AND GOLD NECKLACE AND EARRING SET, CIRCA 1830**

*with fitted box; necklace length: 15in., earring length: 1 1/2in.*

**\$1,000 - 1,500**

**PROPERTY OF MARY CHASE COMSTOCK**

237

**A RUBY, PEARL, ENAMEL AND GOLD BROOCH AND EARRING SET**

*gross weight approximately: 28 grams; brooch dimensions: 1 5/8 x 3in., earring length: 1 1/2in.*

**\$1,500 - 2,000**

**PROPERTY OF VARIOUS OWNERS**

238

**A RUBY, DIAMOND, ENAMEL AND BI-COLOR GOLD RING**

*cushion brilliant-cut ruby approximately: 5.46 x 5.17 x 2.96mm; size: 6*

**\$2,000 - 3,000**

239

**A SEED PEARL, AMETHYST AND GOLD COLLAR, FRENCH**

*with French import mark; length: 14 3/4in.*

**\$1,800 - 2,500**

240

**A MID 19TH CENTURY EMERALD, DIAMOND AND 18K GOLD MESH PURSE, FRENCH, CIRCA 1845**

*with French assay and maker's marks; gross weight approximately: 49 grams; dimensions: 2 7/8 x 2 3/8in.*

**\$2,000 - 3,000**

241

**AN ENAMEL AND 14K GOLD MIRRORED COMPACT AND LIPSTICK, WITH ADJOINING BLACK ENAMEL RING AND CHAIN, CARTIER**

*signed Cartier; lipstick no. 8; compact diameter: 1 1/2in., lipstick length: 1 1/2in., chain lengths: 2in. and 4in.; ring size: 7 1/2*

**\$3,000 - 5,000**

242

**A DIAMOND AND SILVER-TOPPED GOLD BROOCH**

*estimated total diamond weight: 2.95cts; dimensions: 1 1/2 x 1 3/8in.*

**\$1,800 - 2,500**

243

**A SAPPHIRE, DIAMOND AND BI-COLOR GOLD RING**

*cushion mixed-cut sapphire approximately: 7.70 x 6.60 x 4.29mm; size: 4 1/4*

**\$15,000 - 20,000**

Accompanied by AGL report #1093114 dated June 27, 2018, stating the sapphire as: Natural, Kashmir origin, no indications of heat enhancement.

244

**A DIAMOND AND 18K GOLD LINK BRACELET, FRENCH**

*with French assay and maker's marks; gross weight approximately: 30 grams; length: 8in.*

**\$1,200 - 1,800**





237



238



239



241



242



240



243



244



245

**A DIAMOND AND PLATINUM RING**  
estimated total diamond weight: 2.35cts;  
size: 4 1/2

**\$1,000 - 1,500**  
To be sold without reserve

246

**A DOUBLE STRAND PEARL, DIAMOND  
AND PLATINUM NECKLACE**  
pearls approx: 4.0 to 6.4mm; no. 1118;  
lengths: 14 1/4in. and 14 3/4in.

**\$5,000 - 7,000**

Accompanied by GIA report #5192521107  
dated August 14, 2018, stating the pearls  
as: Natural Saltwater, Pinctada species, no  
indications of treatment.

247

**A DIAMOND AND SILVER-TOPPED  
GOLD FLOWER BROOCH, FRENCH**  
with French assay mark; estimated total  
diamond weight: 2.65cts; gross weight  
approximately: 26 grams; dimensions: 4 1/2  
x 1 1/8in.

**\$1,000 - 1,500**  
To be sold without reserve

248

**A SAPPHIRE, DIAMOND AND SILVER-  
TOPPED GOLD BROOCH**  
cushion mixed-cut sapphire approximately:  
6.42 x 5.41mm; with French assay mark;  
with signed fitted box; diameter: 1 1/2in.

**\$1,500 - 2,000**

249

**A DIAMOND AND PLATINUM RING**  
estimated total diamond weight: 2.35cts;  
size: 6 3/4

**\$1,800 - 2,500**

250

**A PEARL, DIAMOND AND PLATINUM  
RING**  
pearl measures: 11.17mm; size: 8

**\$2,000 - 3,000**

Accompanied by GIA report #2191253866  
dated April 13, 2018, stating the pearl as:  
Natural Saltwater, Pinctada species, no  
indications of treatment.





251  
**A PAIR OF DIAMOND AND 18K BI-COLOR GOLD EAR PENDANTS**  
 two old European-cut diamonds approximately: 1.63cts and 1.68cts; length: 5/8in.

\$10,000 - 15,000

252  
**A CULTURED PEARL AND GEM-SET 18K GOLD BLACKAMOR BROOCH, NARDI**  
 signed Nardi; dimensions: 2 1/2 x 1 5/8in.

\$3,000 - 5,000

253  
**AN 18K TRI-COLOR GOLD CLIP AND 18K GOLD EAR CLIP SET, MARIO BUCCELLATI**  
 signed M. Buccellati; weighing approximately: 44 grams; clip dimensions: 4 x 2in., ear clip dimensions: 1 1/8 x 7/8in.

\$4,000 - 6,000

254  
**AN EMERALD AND GOLD RING**  
 size: 5 3/4

\$1,000 - 1,500  
 To be sold without reserve

255<sup>Y</sup>  
**A LATE 19TH CENTURY ENAMEL, QUAHOG PEARL AND GEM-SET BI-COLOR GOLD CHARM BRACELET, CIRCA 1870**  
 gross weight approximately: 60 grams; length: 7in.

\$800 - 1,200  
 To be sold without reserve





256



257



258

259



260



261



262



263

**PROPERTY FROM THE ESTATE OF PATRICK HENRY JR.**

256

**TWO ROCK CRYSTAL QUARTZ AND BLACK ONYX BEAD NECKLACES**

rock crystal quartz beads approximately: 5.8 to 11.6mm; lengths: 60in. and 29in.

**\$1,000 - 1,500**

To be sold without reserve

257

**A DIAMOND AND PLATINUM ETERNITY BAND**

estimated total diamond weight: 1.60cts; size: 5 3/4

**\$1,000 - 1,500**

258

**A COLLECTION OF THREE ENAMEL AND 14K GOLD CHARM BRACELETS**

suspending thirty-five charms; gross weight approximately: 69 grams; lengths: 7in.

**\$1,200 - 1,800**

259

**A DIAMOND AND GEM-SET GOLD CHARM BRACELET**

one charm loose; one charm signed Ruser; gross weight approximately: 121 grams; length: 7 1/4in.

**\$2,000 - 3,000**

260

**A PAIR OF DIAMOND AND 18K GOLD EAR CLIPS, OSCAR HEYMAN BROTHERS**

with maker's mark, no. 78640; estimated total diamond weight: 2.50cts; length: 3/4in.

**\$2,000 - 3,000**

**PROPERTY OF ANOTHER OWNER**

261

**A GOLDEN BERYL AND GOLD PENDANT**

cushion mixed-cut golden beryl approximately: 28.00 x 15.18 x 11.15mm; dimensions: 2 1/2 x 1 1/4in.

**\$1,200 - 1,800**

**PROPERTY FROM A NEW YORK LADY**

262

**A HARDSTONE AND GEM-SET GOLD PLAQUE PENDANT ON 14K GOLD COLLAR**

pendant dimensions: 4 x 3in., collar length: 16in.

**\$1,500 - 2,000**

To be sold without reserve

**PROPERTY OF ANOTHER OWNER**

263

**A YELLOW SAPPHIRE, DIAMOND AND GOLD RING**

oval mixed-cut yellow sapphire approximately: 13.31 x 10.10 x 5.77mm; size: 7

**\$1,500 - 2,000**





264



265



266



267



268



269

**PROPERTY OF A SAN FRANCISCO LADY**

264

**A SAPPHIRE, DIAMOND AND 14K GOLD CONCEALED DIAL BRACELET WRISTWATCH, TIFFANY & CO.**

mechanical movement, case and movement signed Hamilton Watch Co, dial signed Tiffany & Co.; with signed box; gross weight approximately: 21 grams; case diameter: 18mm; length: 6 3/4in.

**\$1,000 - 1,500**

To be sold without reserve

**PROPERTY OF VARIOUS OWNERS**

265

**A DIAMOND AND 18K GOLD BRACELET, ITALIAN**

signed S.S.; estimated total diamond weight: 1.20cts; gross weight approximately: 107 grams; length: 7in.

**\$3,500 - 5,000**

266

**AN RETRO RUBY AND GOLD CLIP, CIRCA 1940**

dimensions: 2 x 3/4in.

**\$1,500 - 2,000**

267

**AN EMERALD, DIAMOND, BI-COLOR GOLD AND PLATINUM RING,**

oval cabochon emerald approximately: 9.02 x 6.30 x 4.90mm; estimated total diamond weight: 1.00ct; size: 3 3/4

**\$2,500 - 3,500**

**FORMERLY THE PROPERTY OF PRINCE CHARLES OF BELGIUM AND ELISABETH OF BAVARIA, QUEEN OF BELGIUM**

268

**A PAIR OF SAPPHIRE AND 18K GOLD CUFFLINKS, GUBELIN**

signed Gubelin, with maker's mark, no.610-14915-06; length: 7/16in.

**\$1,200 - 1,800**

**PROPERTY OF ANOTHER OWNER**

269

**A DIAMOND, PLATINUM AND 18K GOLD BOX**

gross weight approximately: 113 grams; dimensions: 3 1/2 x 1 1/4 x 1 5/8in.

**\$3,500 - 5,000**





**PROPERTY FROM THE ESTATE OF PATRICK HENRY JR.**

270  
**A PAIR OF EMERALD, DIAMOND, PLATINUM AND 18K GOLD EAR CLIPS, OSCAR HEYMAN BROTHERS, 1969**  
*no. 76926, with letter of authenticity; diameter: 1in.*

\$1,500 - 2,500

271  
**A DIAMOND, PLATINUM AND 18K GOLD RING**  
*size: 6 1/2*  
 \$1,000 - 1,500  
 To be sold without reserve

**PROPERTY OF ANOTHER OWNER**

272  
**A RETRO DIAMOND AND 14K GOLD NECKLACE, CIRCA 1945**  
*estimated total diamond weight: 1.10cts; gross weight approximately: 74 grams; length: 18 1/4in.*

\$2,500 - 3,500

**PROPERTY FROM THE ESTATE OF PATRICK HENRY JR.**

273  
**A DIAMOND, SAPPHIRE, RUBY, EMERALD AND 18K GOLD 'EN TREMBLANT' BROOCH, TIFFANY & CO., ITALIAN**  
*signed Tiffany & Co.; gross weight approximately: 25 grams; dimensions: 2 x 1 1/2in.*

\$1,200 - 1,800

274  
**A DIAMOND AND 18K GOLD LINE BRACELET, OSCAR HEYMAN BROTHERS, 1965**  
*no. 82406; with letter of authenticity; total diamond weight: 2.78cts; length: 7 1/4in.*

\$2,500 - 3,500

275  
**AN EMERALD, DIAMOND AND 18K GOLD LINE BRACELET, OSCAR HEYMAN BROTHERS, 1965**  
*no. 82446; with letter of authenticity; total diamond weight: 1.69cts; length: 7 1/4in.*

\$3,000 - 5,000



276

277

278

279

279

**A STERLING SILVER 'BONE' CUFF AND STERLING SILVER 'PEBBLE' BRACELET, TIFFANY & CO., ITALIAN**

*cuff signed Elsa Peretti and Tiffany & Co., 1978; bracelet signed Tiffany & Co., with signed pouch; weighing approximately: 131 grams; cuff diameter: 2 1/2in., bracelet length: 7in.*

**\$1,000 - 1,500**

280

**A PAIR OF RUBY, SAPPHIRE AND 18K GOLD COMPANION RINGS, HARRY WINSTON**

*signed H.W., with signed box; size: 6*

**\$2,000 - 3,000**

281

**A 18K TRI-COLOR GOLD 'C' RING, CARTIER**

*signed Cartier, no.202851; with signed box; size: 6*

**\$800 - 1,000**

282

**A SAPPHIRE, RUBY, DIAMOND AND 18K GOLD 'TRINITY' RING, CARTIER, FRENCH**

*signed Cartier, no.903842, with French assay marks; with signed box and papers; size: 5*

**\$2,000 - 3,000**

**PROPERTY FROM A LADY FROM LA JOLLA, CA**

283

**AN 18K GOLD LIPSTICK HOLDER, ITALIAN**

*weighing approximately: 28 grams; length: 2 7/8in.*

**\$1,000 - 1,500**

To be sold without reserve

284 Y

**A CORAL, BLACK ONYX AND 18K GOLD NECKLACE**

*length: 15in.*

**\$4,000 - 6,000**

285

**A DIAMOND AND GOLD BRACELET**

*gross weight approximately: 75 grams; length: 7in.*

**\$2,500 - 3,500**

**PROPERTY OF A LOS ANGELES LADY**

286

**A DIAMOND AND 18K GOLD BRACELET**

*with maker's mark; estimated total diamond weight: 5.55cts; length: 6 1/2in.*

**\$2,000 - 3,000**

**PROPERTY FROM A LADY FROM LA JOLLA, CA**

287

**A DIAMOND, CULTURED PEARL AND GOLD NECKLACE**

*pearls approximately: 7.5 to 7.8mm; length: 15in.*

**\$1,200 - 1,800**

To be sold without reserve

**PROPERTY OF A LOS ANGELES LADY**

276

**A DIAMOND AND 18K WHITE GOLD ETERNITY BAND**

*size: 5 1/4*

**\$1,000 - 1,500**

To be sold without reserve

277

**A DIAMOND AND 18K WHITE GOLD 'B.ZERO1' RING, BULGARI**

*signed Bulgari, with signed box; size: 6*

**\$1,800 - 2,200**

278

**A COLLECTION OF FOUR RINGS, TIFFANY & CO.**

*one peridot and 18k gold; one 14k tri-color gold; one diamond and sterling silver, signed Peretti; one diamond and 18k gold, signed Peretti; all signed Tiffany & Co.; sizes: 4 1/2, 5 3/4, 6 and 7*

**\$1,000 - 1,500**

To be sold without reserve



280



282



281



283



284



285



286



287





288



289



291



290



292

**PROPERTY FROM A PRIVATE TEXAS COLLECTION**

288 <sup>Y</sup>

**A PAIR OF CORAL, DIAMOND AND 18K GOLD EAR CLIPS**

*dimensions: 1 1/8 x 1 1/8in.*

**\$1,500 - 2,500**

289

**AN ART DECO PEARL, BLACK ONYX, DIAMOND AND PLATINUM BROOCH, CIRCA 1930**

*pearl approximately: 10.1mm; estimated total diamond weight: 4.35cts; length: 3 3/4in.*

**\$3,000 - 5,000**

Accompanied by GIA report #2191418312, dated June 25, 2018, stating the pearl as: Natural Saltwater, Pinctada species, no indications of treatment.

290 <sup>Y</sup>

**A CORAL, DIAMOND AND 18K GOLD RING**

*oval cabochon coral approximately: 19.84 x 14.68 x 10.00mm; size: 8*

**\$1,800 - 2,500**

291 <sup>Y</sup>

**A PAIR OF CORAL, LAPIS LAZULI AND 14K GOLD HINGED BANGLES**

*diameter: 2 3/8in.*

**\$2,500 - 3,500**

292 <sup>Y</sup>

**A CORAL, DIAMOND AND 18K GOLD RING**

*pear cabochon coral approximately: 26.50 x 18.90 x 9.69mm; size: 8 3/4*

**\$2,000 - 3,000**



293



294



295



296



297



298

293<sup>Y</sup>

**A PAIR OF CORAL AND 18K GOLD EAR CLIPS**

*with maker's mark; gross weight approximately: 29 grams; dimensions: 1 3/8 x 1 1/4in.*

**\$1,200 - 1,800**

**PROPERTY OF A SAN FRANCISCO LADY**

294

**A MULTI-STRAND CULTURED PEARL NECKLACE WITH CITRINE AND 14K GOLD CLASP**

*cut-cornered rectangular step-cut citrine approximately: 17.68 x 13.28 x 9.23mm; length: 16 1/2in.*

**\$1,000 - 1,500**

**To be sold without reserve**

**PROPERTY OF VARIOUS OWNERS**

295

**A COLORED CULTURED PEARL, DIAMOND AND GOLD RING**

*pearls approximately: 13.5mm; estimated total diamond weight: 1.40cts; size: 3 (pearls untested for origin of color)*

**\$900 - 1,200**

**To be sold without reserve**

296

**A COLORED CULTURED PEARL, CULTURED PEARL, DIAMOND AND 18K GOLD RING, MARCHAK, FRENCH**

*signed Marchak, with maker's mark and French assay marks; estimated total diamond weight: 1.00ct; size: 5 1/4 (pearl untested for origin of color)*

**\$1,800 - 2,500**

297

**A PINK TOURMALINE AND 18K GOLD RING, GUMPS**

*oval cabochon pink tourmaline approximately: 23.88 x 15.80 x 7.37mm; signed Gumps; size: 4*

**\$900 - 1,200**

**To be sold without reserve**

298

**A CULTURED PEARL, DIAMOND, PINK SAPPHIRE AND 18K GOLD RING**

*pearl approximately: 14.3mm; estimated total diamond weight: 1.60cts; size: 4*

**\$900 - 1,200**

**To be sold without reserve**



299

300

301

302

303

304

299

**A PAIR OF DIAMOND AND 18K BI-COLOR GOLD EAR CLIPS**

*estimated total diamond weight: 1.00ct; dimensions: 1 x 1 1/5in.*

**\$1,500 - 2,500**

300<sup>Y</sup>

**A PAIR OF CORAL, DIAMOND AND 18K GOLD NECKLACES**

*one necklace converts to a 7 1/2in. bracelet; estimated total diamond weight: 28.80cts; necklace lengths: 14 1/2in. and 18in.*

**\$20,000 - 30,000**

301

**AN 18K GOLD 'POLO' BRACELET WRISTWATCH, PIAGET**

*quartz movement; with two additional links, case, dial and movement signed, case serial no. 8131 K616 466908; with signed box; gross weight approximately: 79 grams, case width: 19mm; length: 5 3/4in.*

**\$3,500 - 4,500**

302

**A SPINEL, DIAMOND AND 18K GOLD RING, REPOSSI, FRENCH**

*signed Repossi, with French import marks; estimated total diamond weight: 2.00cts; size: 4 1/4*

**\$2,000 - 3,000**

303

**A PAIR OF DIAMOND, 14K GOLD AND 18K GOLD EAR CLIPS**

*estimated total diamond weight: 3.25cts; diameter: 5/8in.*

**\$2,000 - 3,000**

304

**A DIAMOND AND 18K BI-COLOR GOLD RING, OSCAR HEYMAN BROTHERS**

*no. 13196, with maker's mark; size: 6*

**\$1,800 - 2,500**





305



307



306



308



309

305

**A DIAMOND AND 18K GOLD RING,  
TOGETHER WITH A 14K GOLD RING**

*gross weight approximately: 29 grams; sizes:  
6 1/2 and 7 1/2*

**\$1,000 - 1,500**

**To be sold without reserve**

306<sup>Y</sup>

**A CORAL, DIAMOND AND GOLD  
BROOCH**

*oval double cabochon coral approximately:  
22.35 x 16.74mm; estimated total diamond  
weight: 1.45cts; dimensions: 2 1/2 x 2 1/4in.*

**\$1,800 - 2,500**

307

**A PAIR OF DIAMOND AND 18K GOLD  
EAR PENDANTS**

*estimated total diamond weight: 1.20cts;  
gross weight approximately: 25 grams;  
length: 2in.*

**\$2,000 - 3,000**

308

**A DIAMOND AND 18K GOLD BROOCH**

*estimated total diamond weight: 2.00cts;  
gross weight approximately: 35 grams;  
dimensions: 2 x 2in.*

**\$1,200 - 1,800**

309

**A PAIR OF 18K GOLD HINGED BANGLES**

*weighing approximately: 146 grams;  
diameters: 2 1/4in.*

**\$3,500 - 4,500**



310



311



312



313

310<sup>Y</sup>  
**A PAIR OF CORAL AND 18K GOLD EAR CLIPS**

*dimensions: 1 3/8 x 1 in.*

**\$1,200 - 1,800**

311  
**A DIAMOND, ENAMEL AND BI-COLOR GOLD MUSHROOM CLIP**

*estimated total diamond weight: 1.00ct; gross weight approximately: 31 grams; dimensions: 1 3/4 x 1 1/2 in.*

**\$1,200 - 1,800**

312<sup>Y</sup>  
**A CORAL, DIAMOND, EMERALD AND 18K GOLD SQUIRREL BROOCH, VAN CLEEF & ARPELS, FRENCH**

*signed VCA, no. 1V302-9, with French assay marks; dimensions: 1 1/2 x 1 5/8 in.*

**\$2,000 - 3,000**

**PROPERTY OF VARIOUS OWNERS**

313  
**A DIAMOND AND 18K GOLD COLLAR, PALOMA PICASSO FOR TIFFANY & CO., 1980**

*signed Paloma Picasso and Tiffany & Co.; gross weight approximately: 119 grams; length: 12 in.; width: 1 1/8 in.*

**\$2,800 - 3,500**

314  
**A PAIR OF 18K GOLD DOORKNOCKER EAR CLIPS**

*weighing approximately: 40 grams; length: 1 3/4 x 1 1/4 in.*

**\$1,000 - 1,500**  
To be sold without reserve

315<sup>Y</sup>  
**A CORAL BEAD, TURQUOISE AND 18K GOLD LARIAT NECKLACE, DAVID WEBB**

*coral beads approximately: 3.5 to 7.2mm; signed WEBB; length: 29 1/4 in.*

**\$4,000 - 6,000**

**PROPERTY OF VARIOUS OWNERS**

316  
**A PAIR OF 18K GOLD EAR CLIPS, TOGETHER WITH A GOLD RING**

*weighing approximately: 46 grams; ear clip dimensions: 1 x 1/2 in., ring size: 6 3/4*

**\$1,000 - 1,500**  
To be sold without reserve

317  
**AN 18K GOLD HINGED BANGLE**  
*weighing approximately: 71 grams; diameter: 2 1/4 in.*

**\$1,500 - 2,000**

318  
**A DIAMOND AND GOLD RING**  
*estimated total diamond weight: 1.50cts; gross weight approximately: 26 grams; size: 4*

**\$800 - 1,200**  
To be sold without reserve

319<sup>Y</sup>  
**A CORAL, DIAMOND AND BI-COLOR GOLD MUSHROOM BROOCH**

*estimated total diamond weight: 1.50cts; dimensions: 2 3/4 x 1 1/2 in.*

**\$2,000 - 3,000**





314



315



316



317



318



319





320

321

322

323

320

**AN 18K GOLD LINK NECKLACE**

*weighing approximately: 182 grams; length: 30 1/4in.*

**\$4,500 - 5,500**

321

**A PAIR OF 18K GOLD EAR CLIPS WITH THREE PAIRS OF INTERCHANGEABLE HARDSTONE DOORKNOCKER EARRINGS**

*dimensions: 2 1/2 x 1 1/2in. and 2 x 1in.*

**\$1,500 - 2,000**

322

**A DIAMOND AND GOLD RING**

*estimated total diamond weight: 3.45cts; gross weight approximately: 38 grams; size: 6 1/2*

**\$2,000 - 3,000**

323

**A TURQUOISE AND 18K GOLD HINGED BANGLE**

*gross weight approximately: 33 grams; diameter: 2 1/4in.*

**\$1,000 - 1,500**

324

**A DIAMOND, EMERALD, ENAMEL AND 18K GOLD TIGER CLIP, VAN CLEEF & ARPELS, ITALIAN**

*signed VCA Italy, no.1K58-2; gross weight approximately: 58 grams; dimensions: 4 x 2in.*

**\$5,000 - 7,000**

325

**A TURQUOISE, DIAMOND AND 18K BI-COLOR GOLD BROOCH**

*estimated total diamond weight: 1.50cts; gross weight approximately: 28 grams; dimensions: 2 3/4 x 1 3/4in.*

**\$1,200 - 1,800**

326

**A TIGER'S EYE QUARTZ AND GOLD NECKLACE**

*length: 27 1/2in.*

**\$2,000 - 3,000**

327

**A TIGER'S EYE QUARTZ AND 18K GOLD HINGED BANGLE**

*diameter: 2 1/4in.*

**\$1,200 - 1,800**

328

**A TIGER'S EYE QUARTZ, DIAMOND AND BI-COLOR GOLD PENDANT/BROOCH**

*gross weight approximately: 33 grams; dimensions: 2 x 2 1/4in.*

**\$1,000 - 1,500**

**To be sold without reserve**

329

**A DIAMOND AND PLATINUM RING WITH GOLD JACKET**

*estimated total diamond weight: 4.10cts; size: 5*

**\$2,000 - 3,000**



324



325



326



327



328



329



330



331



332



334



333



**PROPERTY FROM THE ESTATE OF MAE SUE TALLEY**

330 <sup>Y</sup>  
**A THREE STRAND CULTURED PEARL NECKLACE WITH CORAL, DIAMOND AND GOLD CLASP**

cultured pearls approximately: 8.5 to 9.0mm; length: 19 to 23in.

**\$1,000 - 2,000**  
To be sold without reserve

**PROPERTY OF VARIOUS OWNERS**

331  
**A LAVENDER JADEITE JADE, EMERALD, DIAMOND AND 18K GOLD RING**

marquise cabochon lavender jadeite jade approximately: 12.37 x 28.20 x 6.89mm; size: 6 1/2

**\$1,400 - 2,200**

Accompanied by Mason Kay report #180831-1447, dated August 31, 2018, stating: Natural Jadeite Jade-No Dye or polymer detected-'A' Jade.

332  
**A JADEITE JADE AND 14K GOLD RING**  
elongated rectangular cabochon jadeite jade approximately: 18.20 x 7.13mm; size: 7 1/2

**\$1,000 - 2,000**

**PROPERTY FROM AN OREGON ESTATE**

333  
**A DIAMOND AND 14K GOLD BRACELET WRISTWATCH**

mechanical movement, *estimated total diamond weight: 1.75cts; gross weight approximately: 37 grams; case width: 20mm; length: 6 3/4in.*

**\$1,000 - 1,500**  
To be sold without reserve

**PROPERTY OF VARIOUS OWNERS**

334 <sup>Y</sup>  
**A COLLECTION OF CORAL, DIAMOND AND 18K GOLD JEWELRY**

*ear clip dimensions: 1 3/4 x 3/4in., bangle diameter: 2 1/4in., ring size: 6 1/2*

**\$3,000 - 5,000**





335



338



340



336



337



339



335

**A JADEITE JADE AND GOLD RING**

oval cabochon jadeite jade approximately: 12.45 x 16.90 x 4.94mm; size: 7 1/4

**\$1,800 - 2,500**

To be sold without reserve

Accompanied by Mason Kay report #180831-1343 dated August 31, 2018, stating: Natural Jadeite Jade-No Dye or polymer detected-'A'Jade.

336

**AN AMBER AND GOLD PENDANT ON SILK AND 18K GOLD CORD**

cord signed Denise Roberge; length: 32in.

**\$1,500 - 2,500**

337

**A CARNELIAN INTAGLIO AND 18K GOLD RING, ELIZABETH LOCKE**

etched 'Aqa Quli, 1343'; with maker's mark; size: 4

**\$800 - 1,200**

To be sold without reserve

338

**A LAVENDER JADEITE JADE, DIAMOND AND 18K GOLD RING**

oval cabochon lavender jadeite jade approximately: 11.29 x 15.50 x 4.10mm; total diamond weight: 2.28cts; size: 7

**\$5,000 - 7,000**

Accompanied by Mason Kay report #180831-1158 dated August 31, 2018, stating: Natural Jadeite Jade-No Dye or polymer detected-'A'Jade.

339

**A PAIR OF 18K GOLD EAR CLIPS**

weighing approximately: 54 grams; dimensions: 1 5/8 x 1 5/8in.

**\$1,200 - 1,800**

340 Y

**A COLLECTION OF FOUR ENAMEL AND GEM-SET 18K GOLD CHARMS**

lengths: 1 1/2in. and 1 3/4in.

**\$1,000 - 1,500**



341



Pictured: George Jessel, William Powell and Diana "Mousie" Lewis Powell

**PROPERTY FROM THE ESTATE OF  
WILLIAM AND DIANA LEWIS POWELL**

341

**AN ENAMEL AND GOLD BRACELET,  
BROCK & CO.**

picket fence engraved "Diana Powell", with  
a mouse figure at one end opposite a heart  
with "WP"; signed Brock & Co.; gross weight  
approximately 70 grams; length: 7 5/8in.

**\$2,000 - 3,000**



342

342

**A SAPPHIRE AND 14K GOLD  
CIGARETTE BOX, RUSER**

pierced "Diana Lewis Powell", with the  
figure of "Diana and a Gazelle" on the lid;  
signed Ruser; gross weight approximately:  
140 grams; dimensions: 3 3/4 x 2 x 1 3/8in.

**\$3,000 - 4,000**



Pictured: Diana "Mousie" Lewis Powell (middle) and William Powell (right)





343

344

345

343  
**A COLLECTION OF DIAMOND, BLACK STAR SAPPHIRE, PLATINUM AND 14K GOLD JEWELRY, RUSER**  
 comprising a wristwatch, pair of ear clips and a ring; signed Ruser; estimated total diamond weight: 3.45cts; watch length: 6 1/4in., ear clip dimension: 1 x 5/8in., ring size: 7  
**\$2,000 - 3,000**

344  
**A TIGER'S EYE QUARTZ, DIAMOND AND GOLD RING**  
 estimated total diamond weight: 0.95ct; size: 5 1/2  
**\$1,500 - 2,000**

345  
**A CULTURED PEARL, DIAMOND, BLACK ONYX AND 18K GOLD RING AND EAR CLIPS SET**  
 pearls approximately: 14.0 to 15.8mm; estimated total diamond weight: 3.20cts; ear clip dimensions: 1 3/8 x 1in., ring size: 6 1/2  
**\$2,000 - 3,000**



346



347



348



349



346

**A COLORED FRESHWATER PEARL, TSAVORITE GARNET, DIAMOND AND 14K GOLD BROOCH AND EAR CLIP SET**

brooch dimensions: 1 3/4 x 1 1/2in, ear clips dimensions: 1 x 1 1/8in. (pearls untested for origin of color)

**\$1,200 - 1,800**

347

**A RUBY, TURQUOISE AND GOLD PERFUME BOTTLE, JOHN RUBEL**

signed John Rubel; gross weight approximately: 22 grams; dimensions: 2 x 1in.

**\$1,000 - 1,500**

348

**A DIAMOND, ENAMEL AND 14K GOLD LOCKET ON CHAIN**

length: 21 1/2in.

**\$1,000 - 1,500**

349

**A DIAMOND AND GEM-SET 14K GOLD PENDANT/BROOCH AND PAIR OF EAR CLIPS**

brooch dimensions: 1 1/2 x 1 1/4in.; ear clip dimensions: 1 1/4 x 3/4in.

**\$1,200 - 1,800**



**PROPERTY FROM THE ESTATE OF PATRICK HENRY JR.**

350

**A DIAMOND AND PLATINUM WRISTWATCH, TIFFANY & CO.**

mechanical movement, with later added expandable 14k white gold bracelet, dial signed Cartier, movement signed C.H. Meylan, gross weight approximately: 21 grams; length: 5 1/4in., width: 14mm.

**\$1,000 - 1,500**

To be sold without reserve

**FORMERLY THE PROPERTY OF PRINCE CHARLES OF BELGIUM AND ELISABETH OF BAVARIA, QUEEN OF BELGIUM**

351

**A CULTURED PEARL, DIAMOND AND PLATINUM NECKLACE**

pearls approximately: 3.3 to 7.9mm; length: 24 1/2in.

**\$800 - 1,200**

To be sold without reserve

**PROPERTY FROM A CALIFORNIA PIONEER FAMILY**

352

**A DIAMOND, SYNTHETIC SAPPHIRE, SEED PEARL AND PLATINUM WRISTWATCH**

mechanical 17J, 1 adj. movement; movement signed Leschot, no. 3139; estimated total diamond weight: 1.20cts; case width: 14mm; length: 6in.

**\$1,000 - 1,500**

To be sold without reserve

**PROPERTY OF A SAN FRANCISCO LADY**

353

**A PEARL, DIAMOND AND PLATINUM NECKLACE**

pearls approximately: 2.3 to 6.1mm; length: 15in.

**\$3,000 - 5,000**

Accompanied by GIA report #2195499231 dated July 31, 2018, stating the pearls as: Natural Saltwater, no indications of treatment.

**PROPERTY OF VARIOUS OWNERS**

354

**AN ART DECO SAPPHIRE, DIAMOND AND PLATINUM NECKLACE, CIRCA 1930**

cushion pyramidal cabochon sapphire approximately: 10.10 x 8.50 x 5.05mm; estimated total diamond weight: 3.45cts; length: 16 3/4in.

**\$6,000 - 8,000**

Accompanied by AGL report #1092964 dated June 7, 2018, stating the sapphire as: Natural, Ceylon origin, no indications of treatment.

355

**A LATE 19TH CENTURY AMETHYST, DIAMOND, RUBY, SYNTHETIC RUBY AND SILVER-TOPPED GOLD BROOCH**

diameter: 1 7/16in.

**\$1,000 - 1,500**





357

358



359



360



361



362

**PROPERTY OF A NEW MEXICO COLLECTOR**

356

**A DIAMOND, JADE, AMETHYST AND PLATINUM CHARM BRACELET, CIRCA 1930**

*clasp signed Cartier; length: 7in.*

**\$4,000 - 6,000**

**PROPERTY OF VARIOUS OWNERS**

357

**AN EMERALD, DIAMOND AND PLATINUM BROOCH**

*estimated total diamond weight: 1.50cts; dimensions: 1 3/4 x 1 1/2in.*

**\$1,000 - 1,500**

**To be sold without reserve**

358

**A DOUBLE STRAND CULTURED PEARL, RUBY, DIAMOND AND 14K WHITE GOLD NECKLACE**

*pearls approximately: 9.0 to 9.5mm; estimated total diamond weight: 0.90ct; lengths: 22in. and 23 1/2in.*

**\$2,500 - 3,500**

359

**A PAIR OF DIAMOND AND 18K WHITE GOLD EAR PENDANTS**

*central round brilliant-cut diamonds weigh: 1.28cts and 1.25cts; length: 1 1/4in.*

**\$3,000 - 5,000**

360

**AN EMERALD, DIAMOND AND PLATINUM RING**

*oval cabochon emerald approximately: 17.27 x 12.63 x 9.90mm; size: 4 1/2*

**\$1,500 - 2,500**

361

**A PAIR OF ART DECO DIAMOND AND PLATINUM EAR CLIPS, CIRCA 1930**

*estimated total diamond weight: 3.10cts; dimensions: 1 1/16 x 5/8in.*

**\$2,500 - 3,500**

362

**A STAR RUBY, DIAMOND AND PLATINUM RING**

*oval cabochon star ruby weighs: 63.72cts; size: 8*

**\$4,000 - 6,000**

*Accompanied by GIA report #2195561871 dated August 15, 2018, stating the star ruby as: Natural, Burmese Origin, no indications of heat enhancement.*



363  
**A RUBELLITE, DIAMOND AND PLATINUM RING**  
 cut-cornered rectangular step-cut rubellite approximately: 15.75 x 10.82 x 6.30mm; total diamond weight: 1.11cts; size:6

**\$2,500 - 3,500**

364  
**A TSAVORITE GARNET, PINK SAPPHIRE, DIAMOND AND 18K BI-COLOR GOLD FLORAL WREATH NECKLACE**  
 with removable extension for length; estimated total diamond weight: 1.35cts; gross weight approximately: 73 grams; length: 18in. (including extension)

**\$3,000 - 5,000**

365  
**A COLORED DIAMOND, DIAMOND, 18K GOLD AND PLATINUM BAND, SCHLUMBERGER FOR TIFFANY & CO.**  
*signed Schlumberger Studios and Tiffany & Co.; size: 5 3/4 (yellow diamond untested for origin of color)*

**\$3,500 - 5,000**

366  
**A PAIR OF PINK SAPPHIRE AND PLATINUM EARRINGS**  
 oval brilliant-cut step-cut pink sapphires weigh: 1.53cts and 1.56cts; length: 3/4in.

**\$1,500 - 2,500**

Accompanied by GIA report #1162973082 dated February 9, 2015 stating the pink sapphire as: Natural, Burmese origin, no indications of heat enhancement.

Accompanied by GIA report #2165973074 dated February 9, 2015, stating the pink sapphire as: Natural, Burmese origin, no indications of heat enhancement.

367  
**A FANCY INTENSE YELLOW DIAMOND, DIAMOND AND 18K BI-COLOR GOLD RING**  
 cut-cornered modified square brilliant-cut diamond weighs: 3.22cts; size: 5 1/2

**\$25,000 - 35,000**

Accompanied by GIA report #6173920421 dated October 17, 2016, stating the diamond as: Natural Fancy Intense Yellow color, SI1 clarity.

368  
**A COLORED DIAMOND AND 18K BI-COLOR GOLD LONG CHAIN**  
 estimated total diamond weight: 5.50cts; length: 30in. (brown diamonds untested for origin of color)

**\$1,800 - 2,500**



369

369

**A COLORED DIAMOND, DIAMOND AND BI-COLOR GOLD PENDANT NECKLACE**

cut-cornered rectangular modified brilliant-cut diamond approximately: 2.20cts; length: 19 1/2in. (yellow diamonds untested for origin of color)

**\$3,500 - 5,000**

370

**A DIAMOND AND PLATINUM RING**

center round brilliant-cut diamond weighs: 3.52cts; size: 9 3/4

**\$20,000 - 30,000**

Accompanied by GIA report #6193659980 dated September 19, 2018, stating the diamond as: H color, I1 clarity.

371

**SIX COLORED LOOSE DIAMONDS**

**\$4,000 - 7,000**

371

370

373

374

372

Accompanied by GIA report #1186196865 dated March 9, 2017, stating the 0.06ct diamond as: Natural Fancy Pink-Brown.

Accompanied by GIA report #2195114176 dated February 23, 2018, stating the 0.92ct diamond as: Natural Fancy Dark Yellowish-Brown.

Accompanied by GIA report #5192025061 dated January 18, 2018, stating the 0.43ct diamond as: Natural Light Pink.

Accompanied by GIA report #5161954618 dated February 18, 2015, stating the 0.28ct diamond as: Natural Fancy Brownish Orangi-Yellow.

Accompanied by GIA report #2191117153 dated February 21, 2018, stating the 0.31ct diamond as: Natural Fancy Yellow-Green.

Accompanied by GIA report #1192023838 dated January 16, 2018, stating the 0.11ct diamond as: Natural Fancy Brownish Purple-Pink.

372

**A COLORED DIAMOND, DIAMOND AND 18K TRI-COLORED GOLD BRACELET, SAVRANSKY**

signed Savransky; estimated diamond weight: 4.00cts; gross weight approximately: 32 grams; length: 7 1/2in. (colored diamonds untested for origin of color)

**\$2,500 - 3,500**

373

**THREE AMETHYST, PERIDOT, GARNET, DIAMOND AND 18K WHITE GOLD RINGS, POMELLATO**

signed Pomellato, with three signed boxes; size: 3 1/4, 3 1/2 and 4 1/2

**\$2,000 - 3,000**

374

**A PAIR OF TOPAZ, DIAMOND, GOLD AND PLATINUM EAR PENDANTS**

estimated total diamond weight: 1.30cts; length: 2in.

**\$3,000 - 5,000**





375



376



377



378



379



380

375  
**A PAIR OF SAPPHIRE, DIAMOND,  
PLATINUM AND WHITE GOLD  
EARRINGS**  
*estimated total diamond weight: 5.00cts;  
dimensions: 3 1/2 x 1in.*

**\$6,500 - 7,500**

376  
**A COLORED DIAMOND, DIAMOND AND  
18K BI-COLOR GOLD PENDANT ON  
CHAIN**  
*length: 16 1/4in. (yellow diamond untested  
for origin of color)*

**\$2,000 - 3,000**

377  
**A DIAMOND AND 18K WHITE GOLD  
PENDANT NECKLACE**  
*estimated total diamond weight: 2.05cts;  
length: 19in.*

**\$2,000 - 3,000**

378  
**A SAPPHIRE, DIAMOND AND 18K WHITE  
GOLD RING**  
*oval mixed-cut sapphire weighs: 19.75cts;  
estimated total diamond weight: 4.10cts;  
size: 5*

**\$8,000 - 12,000**

379  
**A COLORED DIAMOND, DIAMOND AND  
18K WHITE GOLD RING**  
*estimated total diamond weight: 3.15cts;  
size: 7 1/2 (yellow diamond untested for  
origin of color)*

**\$3,000 - 5,000**

380  
**A DIAMOND AND PLATINUM LONG  
CHAIN**  
*estimated total diamond weight: 41.05cts;  
length: 55in.*

**\$20,000 - 30,000**



381



382



383



384



385



381  
**A PAIR OF DIAMOND AND 18K ROSE GOLD EAR PENDANTS**  
*total diamond weight: 4.50cts; length: 2in.*

**\$3,000 - 5,000**

382  
**A COLORED DIAMOND AND 18K BI-COLOR GOLD NECKLACE**  
*estimated total diamond weight: 3.50cts; length: 17 1/2in. (colored diamonds untested for origin of color)*

**\$3,000 - 5,000**

383  
**A COLORED DIAMOND, DIAMOND AND 18K BI-COLOR GOLD RING**  
*center rectangular modified brilliant cut 1.64cts, Fancy Deep Orangy-Yellow; estimated remaining diamond weight: 2.95cts; size: 7*

**\$7,000 - 9,000**

Accompanied by GIA report #5141794067 dated July 13, 2012, stating the diamond as: Natural Fancy Deep Orangy-Yellow.

384  
**A COLORED DIAMOND, DIAMOND AND 18K WHITE GOLD BRACELET**  
*estimated total diamond weight: 13.00cts; gross weight approximately: 36 grams; length: 7in., width: 2 3/4in. (yellow diamonds untested for origin of color)*

**\$8,000 - 12,000**

385  
**A PAIR OF DIAMOND AND 18K GOLD HOOP EARRINGS**  
*estimated total diamond weight: 5.00cts; diameter: 1 3/4in.*

**\$3,500 - 4,500**



386



387



388



389



390

**PROPERTY OF VARIOUS OWNERS**

386  
**AN 18K GOLD 'SPIRO' NECKLACE AND EAR CLIP SET, TIFFANY & CO., 1993**  
*signed T & Co.; gross weight approximately: 150 grams; necklace length: 17in., ear clip dimensions: 1 x 3/4in.*

**\$5,000 - 7,000**

**PROPERTY OF A LAGUNA BEACH COLLECTION**

387  
**A TURQUOISE, YELLOW SAPPHIRE, DIAMOND AND 18K GOLD RING**  
*size: 6 1/4*

**\$1,500 - 2,000**

388  
**A COLORED DIAMOND, DIAMOND AND 18K BI-COLOR GOLD RING**  
*round brilliant-cut brown diamond approximately: 1.02cts; size: 7 (brown and pink diamonds untested for origin of color)*

**\$4,000 - 6,000**

389  
**A KUNZITE, DIAMOND AND 14K GOLD RING**  
*oval mixed-cut kunzite approximately: 17.32 x 10.19 x 9.59mm; size: 8 1/2*

**\$1,000 - 1,500**  
**To be sold without reserve**

390  
**AN 18K TRI-COLOR GOLD BRACELET, ITALIAN**  
*signed Italy; weighing approximately: 34 grams; length: 7 1/2in.*

**\$1,000 - 1,500**  
**To be sold without reserve**





391



392



393



394



396



395

**PROPERTY FROM A PRIVATE TEXAS COLLECTION**

391  
**A PORCELAIN, CANTERA OPAL, FIRE OPAL AND 18K GOLD PENDANT ON 14K GOLD CHAIN, SAJEN**  
*signed Sajen; length: 20 1/2in.*

**\$1,000 - 1,500**  
To be sold without reserve

392  
**A DIAMOND, RUBY AND BI-COLOR GOLD HUMMINGBIRD BROOCH**  
*no. 6141; estimated total diamond weight: 1.00ct; dimensions: 1 1/2 x 1 1/2in.*

**\$1,000 - 1,500**  
To be sold without reserve

393  
**A DIAMOND AND 18K GOLD RING**  
*estimated total diamond weight: 2.40cts; size: 2 1/2*

**\$1,200 - 1,500**

394  
**AN 18K GOLD NECKLACE, ALEXANDRE REZA, FRENCH**

*signed A. Reza, with French assay and maker's marks; with signed box; weighing approximately: 96 grams; length: 30in.*

**\$3,000 - 4,000**

**PROPERTY OF A LOS ANGELES COLLECTOR**

395  
**A CITRINE, DIAMOND AND 14K GOLD RING**  
*oval mixed-cut citrine approximately: 16.18 x 13.53 x 9.05mm; size: 5 3/4*

**\$800 - 1,000**

**PROPERTY OF VARIOUS OWNERS**

396  
**A DIAMOND AND 18K GOLD FLOWER RING**  
*size: 6 3/4*

**\$1,000 - 2,000**



397

398

399

400

401

402

397

**A DIAMOND AND 18K GOLD NECKLACE,  
TOGETHER WITH A PAIR OF 18K GOLD  
EAR CLIPS**

*estimated total diamond weight: 2.00cts;  
gross weight approximately: 98 grams;  
necklace length: 15in., ear clips dimensions:  
1 x 3/8in.*

**\$3,000 - 5,000**

398

**A PAIR OF DIAMOND AND 14K GOLD  
STUD EARRINGS**

*estimated total diamond weight: 1.45cts;  
diameter: 1/4in.*

**\$2,500 - 3,500**

399

**A SAPPHIRE, DIAMOND AND 14K GOLD  
HINGED BANGLE**

*estimated total diamond weight: 1.30cts;  
diameter: 2 1/4in.*

**\$800 - 1,000**

400

**A BLUE TOPAZ, DIAMOND AND 18K  
GOLD RING**

*cut-cornered rectangular mixed-cut blue  
topaz approximately: 17.83 x 15.80 x  
10.62mm; size: 7 1/2*

**\$1,000 - 1,500**

401

**A DIAMOND AND GOLD HINGED  
BANGLE**

*estimated total diamond weight: 1.50cts;  
gross weight approximately: 32 grams;  
diameter: 2 1/2in.*

**\$1,500 - 2,500**

402

**A GOLD NECKLACE**

*weighing approximately: 114 grams; length:  
25 1/2in.*

**\$3,000 - 5,000**



403



404



405



406



407



408

403

**A DIAMOND, COLORED DIAMOND AND 18K BI-COLOR GOLD STRAP WRISTWATCH, CHOPARD**

quartz movement, case and dial signed, case no. 538 1 476585 13/6638/405; with original box and papers, extra strap and key; estimated total diamond weight: 2.00cts; gross weight approximately: 22 grams; case width: 12mm.

**\$4,000 - 6,000**

404

**A DIAMOND AND GOLD HEART PENDANT ON 18K GOLD CHAIN**

estimated total diamond weight: 1.20cts; length: 21 1/4in.

**\$1,000 - 1,500**

To be sold without reserve

405

**A DIAMOND AND 18K GOLD RING**

estimated total diamond weight: 1.45cts; size: 6

**\$2,200 - 2,800**

406

**A DOUBLE STRAND CULTURED PEARL, DIAMOND AND 14K WHITE GOLD NECKLACE**

pearls approximately: 7.3 to 8.5mm; length: 26in.

**\$800 - 1,200**

407

**A CULTURED PEARL, COLORED DIAMOND AND 18K BI-COLOR GOLD RING**

pearl approximately: 15.5mm; estimated total diamond weight: 2.95cts; size: 6 1/4 (yellow diamonds untested for origin of color)

**\$3,000 - 5,000**

408

**AN 18K GOLD BRACELET, TIFFANY & CO.**

signed Tiffany & Co.; weighing approximately: 34 grams; length: 7 3/4in.

**\$2,000 - 3,000**





409



411



412



410



413



414



409  
**A PINK SAPPHIRE, DIAMOND AND 18K GOLD RING**

oval mixed-cut pink sapphire weighs: 3.18cts; estimated total diamond weight: 2.20cts; size: 5 1/4

**\$12,000 - 18,000**

Accompanied by AGL report # CS61664 dated June 18, 2014, stating the pink sapphire as: Natural, Burmese origin, no indications of heat enhancement.

410  
**A RUBY AND GOLD COLLAR**

gross weight approximately: 67 grams; length: 15in.

**\$2,000 - 4,000**

411  
**A PAIR OF RUBELLITE, DIAMOND AND 18K GOLD EARRINGS, PAVÉ**

pear brilliant-cut rubellites approximately: 14.78 x 9.76 x 6.35mm; signed PAVÉ; length: 1 1/4in.

**\$1,000 - 1,500**

412  
**A PAIR RUBELLITE, DIAMOND AND 18K GOLD EAR CLIPS AND RING SET**

estimated total diamond weight: 1.30cts; gross weight approximately: 25 grams; ear clip dimensions: 1 x 3/4in., ring size: 6 1/2

**\$2,000 - 3,000**

413  
**A DIAMOND AND 18K BI-COLOR GOLD BUCKLE BRACELET AND RING SET**

gross weight approximately: 40 grams; length: 8 1/2in., ring size: adjustable

**\$800 - 1,000**

414  
**A DIAMOND AND 14K GOLD HINGED BANGLE**

estimated total diamond weight: 1.30cts; gross weight approximately: 31 grams; diameter: 2 3/16in.

**\$1,000 - 1,500**  
**To be sold without reserve**



415



416



417



418



419



420

415

**A GREEN TOURMALINE, DIAMOND AND GOLD PENDANT ON 14K GOLD CHAIN**

round fancy mixed-cut green tourmaline approximately: 13.35 x 13.39 x 9.14mm; estimated total diamond weight: 1.80cts; length: 16 1/2in.

**\$1,200 - 1,800**

To be sold without reserve

416

**A GREEN TOURMALINE AND 18K GOLD RING, SCHLUMBERGER FOR TIFFANY & CO.**

cushion fancy mixed-cut green tourmaline approximately: 13.84 x 12.89 x 8.63mm; signed Schlumberger, Tiffany; size: 6

**\$3,000 - 5,000**

This ring was gifted from Irving "Swifty" Lazar to present owner.

417

**A DIAMOND AND 18K GOLD HINGED BANGLE**

total diamond weight: 4.55cts; diameter: 2 3/8in.

**\$3,000 - 5,000**

**PROPERTY OF A LAGUNA BEACH COLLECTION**

418

**A KUNZITE, DIAMOND AND GOLD RING, BHAMI**

signed Bhami, no. 0104N838; estimated total diamond weight: 2.00cts; size: 7

**\$2,500 - 3,500**

**PROPERTY OF VARIOUS OWNERS**

419

**A PINK TOURMALINE, DIAMOND AND 18K BI-COLOR GOLD RING, FRENCH**

cut-cornered rectangular step-cut pink tourmaline approximately: 14.33 x 10.03 x 6.02mm; with French assay and maker's marks, no. 47934; size: 9 3/4

**\$1,000 - 1,500**

To be sold without reserve

420

**A COLORED CULTURED PEARL, TOURMALINE AND GOLD NECKLACE**

pearls approximately: 8.9 to 12.2mm; length: 18 1/2in. (colored pearls untested for origin of color)

**\$800 - 1,200**

To be sold without reserve



421

423

424

422

421  
**AN EMERALD, DIAMOND AND GOLD RING**

cut-cornered rectangular step-cut emerald approximately: 7.82 x 7.76 x 4.61mm; estimated total diamond weight: 1.50cts; size: 5 1/2

**\$2,000 - 3,000**

422  
**A COLORED DIAMOND, DIAMOND AND 18K BI-COLOR GOLD RING**

center round brilliant-cut brown diamond weighs: 2.16cts; size: 7 (brown and yellow diamonds untested for origin of color)

**\$8,000 - 12,000**

423  
**AN EMERALD, DIAMOND AND GOLD NECKLACE**

estimated total diamond weight: 15.25cts; gross weight approximately: 202 grams; length: 18in.

**\$15,000 - 20,000**

424  
**A COLORED DIAMOND, DIAMOND AND 18K GOLD RING**

center oval brilliant-cut brown diamond weighs: 1.12cts; total remaining diamond weight: 1.56cts; size: 7 (brown and pink diamond untested for origin of color)

**\$3,500 - 4,500**





425

426

427

429

428

430

425  
**A PAIR OF DIAMOND AND 18K GOLD EAR CLIPS**

*estimated total diamond weight: 1.90cts; dimensions: 3/4 x 3/4in.*

**\$1,500 - 2,000**

426  
**AN 18K GOLD NECKLACE, FOPE, ITALIAN**

*signed FOPE, with maker's marks; weighing approximately: 59 grams; length: 18in.*

**\$1,500 - 2,500**

427  
**AN EMERALD, DIAMOND AND 18K GOLD RING, DIANA VINCENT**

*oval mixed-cut emerald approximately: 10.21 x 7.62 x 5.03mm; signed Diana Vincent; size: 4 3/4*

**\$1,500 - 2,500**

428  
**AN EMERALD AND 18K GOLD RING, BULGARI**

*signed Bulgari, no. B413518; size: 6 1/2 (adjustable)*

**\$1,800 - 2,500**

429  
**A COLORED SAPPHIRE, EMERALD, DIAMOND AND 18K GOLD SNAKE RING**

*size: 7 1/2*

**\$2,000 - 3,000**

430  
**A DIAMOND AND 18K GOLD BRACELET**

*estimated total diamond weight: 6.80cts; length: 7in.*

**\$2,500 - 3,500**



431



432



433

434



431  
**AN 18K GOLD BROOCH**  
*weighing approximately: 65 grams;  
dimensions: 2 x 2in.*

**\$1,500 - 2,500**

433  
**AN 18K TRI-COLOR GOLD BRACELET**  
*weighing approximately: 57 grams; length: 6  
1/2in., width: 1 3/4in.*

**\$1,500 - 2,000**

434  
**AN 18K GOLD LINK BRACELET**  
*weighing approximately: 163 grams; length:  
7in., width: 1 3/4in.*

**\$4,000 - 6,000**

432  
**A 14K GOLD HINGED BANGLE**  
*weighing approximately: 66 grams; diameter:  
2 1/2in., width: 1 1/2in.*

**\$1,500 - 2,000**



435



437



436



438



439

435

**A COLORED DIAMOND, DIAMOND AND 18K WHITE GOLD NECKLACE**

pear brilliant-cut Natural Fancy Deep Orange-Yellow diamond weighs: 2.72cts; *estimated total diamond weight: 1.40cts; length: 17 1/2in. (yellow diamonds untested for origin of color)*

**\$8,000 - 12,000**

Accompanied by GIA report #2195290901 dated April 24, 2018, stating the diamond as: Natural Fancy Deep Orange-Yellow.

436

**A DIAMOND AND 18K WHITE GOLD CROSSOVER RING**

*estimated total diamond weight: 3.55cts; size: 7*

**\$3,000 - 5,000**

437

**A FANCY YELLOW DIAMOND, DIAMOND AND 18K WHITE GOLD RING**

pear modified brilliant-cut Natural Fancy Yellow diamond weighs: 3.01cts; *estimated total diamond weight: 1.90cts; size: 7 1/4*

**\$10,000 - 15,000**

Accompanied by GIA report #5191659831 dated September 19, 2018, stating the diamond as: Natural Fancy Yellow.

438

**A COLORED CULTURED PEARL, DIAMOND AND 18K WHITE GOLD LONG NECKLACE**

pearls approximately: 8.0 to 14.0mm; *length: 90in. (pearls untested for origin of color)*

**\$6,000 - 8,000**

439

**A JADEITE JADE, DIAMOND AND 18K WHITE GOLD RING**

*size: 9 1/4*

**\$3,000 - 5,000**

Please see department for Mason Kay Report.





440

441



442



443



444

**PROPERTY FROM THE ESTATE OF A COLORADO ARTIST**

440  
**A PAIR OF SAPPHIRE, DIAMOND, 18K GOLD AND PLATINUM EAR CLIPS**

*estimated total diamond weight: 1.40cts; gross weight approximately: 40 grams; dimensions: 1 9/16 x 1in.*

**\$2,000 - 3,000**

441  
**A DIAMOND AND 18K BI-COLOR GOLD NECKLACE**

*estimated total diamond weight: 1.00ct; gross weight approximately: 70 grams; length: 14 1/2in.*

**\$2,000 - 3,000**

442  
**A DIAMOND AND 18K GOLD BRACELET WRISTWATCH, CHOPARD**

*quartz movement; case and dial signed; case n0. 27/6770-23/11 701472 5254; estimated total diamond weight: 1.95cts; gross weight approximately: 120 grams; case width: 30mm; length: 6in.*

**\$4,000 - 6,000**

443  
**A RUBY, DIAMOND AND 18K GOLD RING**

*oval sugarloaf cabochon ruby approximately: 21.69 x 15.88 x 12.66mm; estimated total diamond weight: 3.00cts; size: 6 3/4*

**\$6,000 - 8,000**

444  
**A PAIR OF SAPPHIRE, EMERALD, DIAMOND AND 18K GOLD PANTHER EAR CLIPS, ITALIAN**

*estimated total diamond weight: 6.00cts; diameter: 1 1/4in.*

**\$2,500 - 3,500**



445



446



447

448

449

450

445

**AN AMETHYST, DIAMOND AND BI-COLOR GOLD RING**

oval brilliant-cut amethyst approximately: 23.00 x 16.47 x 12.02mm; estimated total diamond weight: 3.00cts; size: 5

**\$2,000 - 3,000**

446

**A COLORED DIAMOND, DIAMOND AND 18K GOLD BUTTERFLY BROOCH, JEAN VITAU**

signed Jean Vitau; estimated total diamond weight: 3.00cts; dimensions: 2 1/4 x 1 1/4in. (black and orange diamonds untested for origin of color)

**\$1,500 - 2,500**

447

**A PAIR OF DIAMOND, STONE AND 14K WHITE GOLD BRACELETS**

estimated total diamond weight: 5.40cts; gross weight approximately: 35 grams; diameter: lengths: 7 1/2in.

**\$2,500 - 3,500**

448

**A PAIR OF DIAMOND, STONE AND 14K WHITE GOLD BRACELETS**

estimated total diamond weight: 3.20cts; gross weight approximately: 33 grams; lengths: 7 1/2in.

**\$1,800 - 2,500**

449

**A PAIR OF DIAMOND AND PLATINUM BANDS, TOGETHER WITH A PAIR OF SAPPHIRE AND 18K WHITE GOLD BANDS**

estimated total diamond weight: 3.00cts; sizes: 4 3/4 and 6

**\$2,500 - 3,500**

450

**A KUNZITE, DIAMOND AND 14K BI-COLOR GOLD RING**

cushion fancy mixed-cut kunzite: 23.72 x 18.30 x 13.65mm; estimated total diamond weight: 2.20cts; size: 4

**\$3,000 - 5,000**



451  
**A PAIR OF CULTURED PEARL, RUBY, DIAMOND AND 18K GOLD EAR CLIPS, FRED LEIGHTON**  
 pearls approximately: 7.5 to 7.7mm; signed Fred Leighton; dimensions: 1 3/8 x 1 1/2in.

**\$1,800 - 2,500**

452  
**A RUBY, DIAMOND AND 14K WHITE GOLD RING**  
 estimated total diamond weight: 4.00cts

**\$10,000 - 15,000**

See department for AGL Report

453  
**A RUBY, DIAMOND AND 18K WHITE GOLD BRACELET**  
 estimated total diamond weight: 4.50cts; gross weight approximately: 88 grams; length: 7 1/4in., width: 1 3/8in.

**\$7,000 - 9,000**

454  
**A PAIR OF DIAMOND AND WHITE GOLD EARRINGS**  
 estimated total diamond weight: 4.60cts; gross weight approximately: 25 grams; length: 2in.

**\$3,000 - 5,000**

455  
**A DIAMOND AND 18K WHITE GOLD INTEGRAL BRACELET WRISTWATCH, PIAGET**  
 mechanical movement; case, dial and movement signed; case serial no. 9387A6 216212; estimated total diamond weight: 3.70cts; gross weight approximately: 62 grams; case width: 30mm; length: 6in.

**\$3,000 - 5,000**





456

457

458

459

460

456

**A DIAMOND AND PLATINUM ETERNITY BAND**

*estimated total diamond weight: 4.15cts;  
size: 4 1/2*

**\$3,000 - 5,000**

457

**A MULTI-STRAND FRESHWATER CULTURED PEARL, DIAMOND AND PLATINUM COLLAR**

*pearls approximately: 3.2 to 3.5mm;  
estimated total diamond weight: 8.80cts;  
length: 16in., width: 1 3/4in.*

**\$3,000 - 5,000**

458

**A CULTURED PEARL, DIAMOND, WHITE METAL AND WHITE GOLD BRACELET**

*pearls approximately: 4.5 to 4.9mm;  
estimated total diamond weight: 3.50cts;  
length: 7 5/8in.*

**\$2,500 - 3,500**

459

**A PAIR OF DIAMOND AND 14K WHITE GOLD HOOP EARRINGS**

*total diamond weight: 8.47cts; diameter: 1 1/4in.*

**\$2,500 - 3,500**

460

**A RUBY, DIAMOND AND 18K WHITE GOLD BRACELET**

*estimated total diamond weight: 2.50cts;  
gross weight approximately: 67 grams;  
diameter: 7in.*

**\$3,000 - 5,000**



461  
**A SAPPHIRE, DIAMOND AND WHITE GOLD NECKLACE AND EAR PENDANT SET**  
*estimated total diamond weight: 6.00cts; gross weight approximately: 39 grams; necklace length: 16in., earring length: 1 1/4in.*

**\$5,000 - 7,000**

462  
**A TANZANITE, DIAMOND AND PLATINUM RING**  
*oval brilliant-cut tanzanite approximately: 19.93 x 13.23 x 8.57mm; estimated total diamond weight: 3.60cts; size: 5 1/2*

**\$3,500 - 5,000**

463  
**A DIAMOND, SAPPHIRE AND WHITE GOLD BRACELET**  
*estimated total diamond weight: 9.00cts; gross weight approximately: 35 grams; length: 7 1/4in.*

**\$3,000 - 5,000**

**PROPERTY FROM VARIOUS OWNERS**

464  
**A DIAMOND, EMERALD AND 18K WHITE GOLD RING**  
*center round brilliant-cut diamond weighs: 2.01cts; total remaining diamond weight: 2.19cts; size: 6*

**\$2,500 - 3,500**

464

465

466

465  
**A DIAMOND AND PLATINUM RING**  
*old European-cut diamond weighs: 2.49cts; size: 8*

**\$5,500 - 6,500**

466  
**A SAPPHIRE, DIAMOND AND PLATINUM RING**  
*round brilliant-cut diamond weighs: 1.59cts; size: 6 1/2*

**\$2,000 - 3,000**



467



469



470



471



472

467

**A SAPPHIRE, DIAMOND AND WHITE GOLD RING**

rectangular emerald-cut sapphire approximately: 10.36 x 9.82 x 5.95mm; size: 6 1/2

**\$3,500 - 5,000**

Accompanied by AGL report #CS66110 dated February 17, 2015, stating the sapphire as Natural, Thailand origin, no indication of heat enhancement.

468

**A DIAMOND AND PLATINUM NECKLACE, SOPHIA D.**

signed *Sophia D.*; estimated total diamond weight: 4.00cts; length: 16in.

**\$2,000 - 3,000**

469

**A PAIR OF DIAMOND AND GEM-SET PLATINUM EAR PENDANTS**

center round brilliant-cut diamonds weigh: 1.61cts and 1.78cts; length: 2in.

**\$6,000 - 8,000**

470

**A SAPPHIRE, DIAMOND AND PLATINUM RING**

oval mixed-cut sapphire approximately: 7.93 x 6.84 x 5.80mm; size: 4 1/2

**\$2,000 - 3,000**

471

**A PAIR OF DIAMOND, EMERALD AND PLATINUM EAR PENDANTS**

estimated total diamond weight: 2.80cts; length: 1 1/4in.

**\$3,000 - 5,000**

472

**A DIAMOND, EMERALD AND PLATINUM RING**

round brilliant-cut diamond weighs: 1.10cts; size: 6 1/2

**\$2,000 - 3,000**





473



474



476



475



477

478



473  
**A DIAMOND AND WHITE GOLD PENDANT ON 14K WHITE GOLD CHAIN**  
round brilliant-cut diamond approximately: 1.30cts; length: 15 1/2in.

\$1,500 - 2,500

474  
**A DIAMOND AND 18K WHITE GOLD BRACELET, SAVRANSKY**  
signed Savransky; estimated total diamond weight: 10.75cts; gross weight approximately: 27 grams; length: 6 3/4in.

\$7,000 - 9,000

475  
**AN EMERALD, DIAMOND AND 18K BI-COLOR GOLD RING**  
octagonal step-cut emerald weighs: 5.82cts; total diamond weight: 2.13cts; size: 6 1/4

\$4,000 - 6,000

Accompanied by GIA report #5191350373 dated May 16,2018, stating the emerald as: Zambian origin, clarity enhancement (F2).

476  
**A DIAMOND, RUBY, BLACK ONYX AND 18K WHITE GOLD BANGLE**  
total diamond weight: 24.39cts; diameter: 2 1/2in.

\$15,000 - 20,000

477  
**A DIAMOND AND PLATINUM RING AND BAND SET**  
cut-cornered square step-cut diamond approximately: 1.10cts; size: 6

\$2,000 - 4,000

478  
**A RUBY, DIAMOND AND PLATINUM BRACELET**  
total diamond weight: 2.10cts; gross weight approximately: 41 grams; length: 7 1/2in.

\$15,000 - 20,000

Accompanied by GIA report #6197351254 dated May 15, 2018, stating the ruby as: Burmese origin, minor heat enhancement.



479



480



482



483



481



484

479

**A PAIR OF EMERALD, DIAMOND AND 18K WHITE GOLD EAR PENDANTS**

*estimated total diamond weight: 3.60cts; length: 2 1/8in.*

**\$3,500 - 5,000**

480

**AN EMERALD, DIAMOND, GOLD AND PLATINUM RING**

*octagonal step-cut emerald weighs: 2.43cts; size: 7 1/2*

**\$2,000 - 4,000**

Accompanied by GIA report #2165770159 dated December 05, 2014, stating the emerald as: Natural, Colombian origin, indications of clarity enhancement (F1).

481

**A PINK SAPPHIRE, DIAMOND AND PLATINUM RING**

*oval brilliant step-cut pink sapphire weighs: 2.54cts; size: 6 1/4*

**\$2,000 - 3,000**

Accompanied by GIA report #2183905062 dated December 9, 2017, stating the pink sapphire as: Natural, Burmese origin, heat treated.

482

**AN EMERALD, OPAL, DIAMOND AND 14K BI-COLOR GOLD BRACELET**

*pear cabochon emerald approximately: 17.35 x 10.71 x 6.14mm; estimated total diamond weight: 2.00cts; length: 7 1/4in., width: 1 5/8in.*

**\$2,800 - 3,500**

483

**A DIAMOND AND 18K WHITE GOLD ETERNITY BAND**

*total diamond weight: 6.50cts; size: 7*

**\$4,500 - 5,500**

484

**A DIAMOND AND PLATINUM BRACELET, TIFFANY & CO.**

*signed Tiffany & Co.; with signed box; length: 6 1/2in.*

**\$1,500 - 2,000**

To be sold without reserve



485  
**AMETHYST, RHODONITE AND NEPHRITE FLORAL STUDY  
– “FUCHSIA”**

*Georg Wild, Idar-Oberstein, Germany circa 1960*  
composed as a single stem of fuchsia bearing two blossoms and three buds; the blossoms formed of carved transparent amethyst with pink rhodonite pedals and buds with six carved Russian nephrite leaves on 18K gold stem which is removable from a polished gemstone vase; *height: 7in.*

**\$1,500 - 2,000**



486  
**RHODONITE AND NEPHRITE LADY'S SLIPPER**

*Georg Wild, Idar-Oberstein, Germany circa 1960*  
the blossom carved of Russian rhodonite on an 18K gold stem with three carved Russian nephrite leaves set in a vase formed of clear rock crystal quartz meant to imitate the water level effect in trompe-o'eil; *height: 10 1/4in.*

**\$1,500 - 2,000**



# Bonhams

AUCTIONEERS SINCE 1793



## The Elegant Home

Select Silver, Furniture, Decorative and Fine Arts

Los Angeles | November 12-13, 2018

### PREVIEW

Friday, November 9 12-5pm  
Saturday, November 10 12-5pm  
Sunday, November 11 12-5pm

### INQUIRIES

+1 (323) 436 5434  
[silver.us@bonhams.com](mailto:silver.us@bonhams.com)  
[bonhams.com/silver](http://bonhams.com/silver)

### AN AMERICAN GILT STERLING SILVER FIGURAL PUNCH BOWL AND LADLE

*by George C. Shreve & Co.,  
San Francisco, CA late 19th Century*  
\$3,000 - 5,000

# Bonhams

AUCTIONEERS SINCE 1793



Presents ...

## The Dark Side of Hollywood

New York | November 20, 2018

### PREVIEW

Los Angeles

November 2-4

New York

November 16-20

### INQUIRIES

+1 (323) 436 5409

[entertainment.us@bonhams.com](mailto:entertainment.us@bonhams.com)

[bonhams.com/tcm](http://bonhams.com/tcm)

**BELA LUGOSI'S COUNT DRACULA  
CAPE FROM ABBOTT AND  
COSTELLO MEET FRANKENSTEIN**

Refer to Department for estimates

# Bonhams

AUCTIONEERS SINCE 1793



## Prints & Multiples

Los Angeles | Spring 2019

**CONSIGNMENTS  
NOW INVITED**

**INQUIRIES**

+1 (323) 436 5435  
+1 (415) 503 3259  
morisa.rosenberg@bonhams.com  
[bonhams.com/prints](https://www.bonhams.com/prints)

**ANDY WARHOL (1928-1987)**

*Giant Panda*, from *Endangered  
Species* (F./S. II.295), 1983  
Screenprint in colors  
sheet 38 x 38in  
**Sold for \$75,000**



## CONDITIONS OF SALE

The following Conditions of Sale, as amended by any published or posted notices or verbal announcements during the sale, constitute the entire terms and conditions on which property listed in the catalog shall be offered for sale or sold by Bonhams & Butterfields Auctioneers Corp. and any consignor of such property for whom we act as agent. If live online bidding is available for the subject auction, additional terms and conditions of sale relating to online bidding will apply; see [www.bonhams.com/WebTerms](http://www.bonhams.com/WebTerms) for the supplemental terms. As used herein, "Bonhams," "we" and "us" refer to Bonhams & Butterfields Auctioneers Corp.

1. As used herein, the term "bid price" means the price at which a lot is successfully knocked down to the purchaser. The term "purchase price" means the aggregate of (a) the bid price, (b) a PREMIUM retained by us and payable by the purchaser EQUAL TO 25% OF THE FIRST \$250,000 OF THE BID PRICE, 20% OF THE AMOUNT OF THE BID PRICE ABOVE \$250,001 UP TO AND INCLUDING \$4,000,000, AND 12.5% OF THE AMOUNT OF THE BID PRICE OVER \$4,000,000, and (c) unless the purchaser is exempt by law from the payment thereof, any Alabama, Arizona, California, Colorado, Connecticut, Florida, Georgia, Hawaii, Illinois, Indiana, Kentucky, Maine, Massachusetts, Michigan, Minnesota, Nevada, New Jersey, New York, North Carolina, Ohio, Pennsylvania, Rhode Island, Texas, Virginia, Washington, D.C., Washington state, Wisconsin, Wyoming or other state or local sales tax (or compensating use tax) and other applicable taxes. With regard to New York sales tax, please refer to the "Sales and Use Tax" section of these Conditions of Sale.

2. On the fall of the auctioneer's hammer, the highest bidder shall have purchased the offered lot in accordance and subject to compliance with all of the conditions set forth herein and (a) assumes full risk and responsibility therefor, (b) if requested will sign a confirmation of purchase, and (c) will pay the purchase price in full or such part as we may require for all lots purchased. No lot may be transferred. Any person placing a bid as agent on behalf of another (whether or not such person has disclosed that fact or the identity of the principal) may be jointly and severally liable with the principal under any contract resulting from the acceptance of a bid.

Unless otherwise agreed, payment in good funds is due and payable within five (5) business days following the auction sale. Whenever the purchaser pays only a part of the total purchase price for one or more lots purchased, we may apply such payments, in our sole discretion, to the lot or lots we choose. Payment will not be deemed made in full until we have collected good funds for all amounts due.

Payment for purchases may be made in or by (a) cash, (b) cashier's check or money order, (c) personal check with approved credit drawn on a U.S. bank, (d) wire transfer or other immediate bank transfer, or (e) Visa, MasterCard, American Express or Discover credit, charge or debit card. A processing fee will be assessed on any returned checks. Please note that the amount of cash notes and cash equivalents that can be accepted from a given purchaser may be limited.

To the fullest extent permitted by applicable law: The purchaser grants us a security interest in the property, and we may retain as collateral security for the purchaser's obligations to us, any property and all monies held or received by us for the account of the purchaser, in our possession. We also retain all rights of a secured party under the California Commercial Code. If the foregoing conditions or any other applicable conditions herein are not complied with, in addition to all other remedies available to us and the consignor by law, we may at our election: (a) hold the purchaser liable for the full purchase price and any late charges, collection costs, attorneys' fees and costs, expenses and incidental damages incurred by us or the

consignor arising out of the purchaser's breach; (b) cancel the sale, retaining as liquidated damages all payments made by the purchaser; and/or (c) cancel the sale and/or resell the purchased property, at public auction and/or by private sale, and in such event the purchaser shall be liable for the payment of all consequential damages, including any deficiencies or monetary losses, and all costs and expenses of such sale or sales, our commissions at our standard rates, all other charges due hereunder, all late charges, collection costs, attorneys' fees and costs, expenses and incidental damages. In addition, where two or more amounts are owed in respect of different transactions by the purchaser to us, to Bonhams 1793 Limited and/or to any of our other affiliates, subsidiaries or parent companies worldwide within the Bonhams Group, we reserve the right to apply any monies paid in respect of a transaction to discharge any amount owed by the purchaser. If all fees, commissions, premiums, bid prices and other sums due to us from the purchaser are not paid promptly as provided in these Conditions of Sale, we reserve the right to impose a finance charge equal to 1.5% per month (or, if lower, the maximum nonusurious rate of interest permitted by applicable law), on all amounts due to us beginning on the 31st day following the sale until payment is received, in addition to other remedies available to us by law.

3. We reserve the right to withdraw any property and to divide and combine lots at any time before such property's auction. Unless otherwise announced by the auctioneer at the time of sale, all bids are per lot as numbered in the catalog and no lots shall be divided or combined for sale.

4. We reserve the right to reject a bid from any bidder, to split any bidding increment, and to advance the bidding in any manner the auctioneer may decide. In the event of any dispute between bidders, or in the event the auctioneer doubts the validity of any bid, the auctioneer shall have sole and final discretion either to determine the successful bidder or to re-offer and resell the article in dispute. If any dispute arises after the sale, our sales records shall be conclusive in all respects.

5. If we are prevented by fire, theft or any other reason whatsoever from delivering any property to the purchaser or a sale otherwise cannot be completed, our liability shall be limited to the sum actually paid therefor by the purchaser and shall in no event include any compensatory, incidental or consequential damages.

6. If a lot is offered subject to a reserve, we may implement such reserve by bidding on behalf of the consignor, whether by opening bidding or continuing bidding in response to other bidders until reaching the reserve. If we have an interest in an offered lot and the proceeds therefrom other than our commissions, we may bid therefor to protect such interest. **CONSIGNORS ARE NOT ALLOWED TO BID ON THEIR OWN ITEMS.**

7. All statements contained in the catalog or in any bill of sale, condition report, invoice or elsewhere as to authorship, period, culture, source, origin, measurement, quality, rarity, provenance, importance, exhibition and literature of historical relevance, or physical condition **ARE QUALIFIED STATEMENTS OF OPINION AND NOT REPRESENTATIONS OR WARRANTIES.** No employee or agent of Bonhams is authorized to make on our behalf or on that of the consignor any representation or warranty, oral or written, with respect to any property.

8. All purchased property shall be removed from the premises at which the sale is conducted by the date(s) and time(s) set forth in the "Buyer's Guide" portion of this catalog. Property designated with a "W" and associated purchased lots, if not removed promptly following sale, will be transferred to an offsite warehouse at the purchaser's risk and expense, as set forth in more detail in the "Buyer's Guide." Purchased property that is permitted to remain

onsite at Bonhams' facility should be removed at the purchaser's expense not later than 5:00 p.m. Pacific Time five (5) business days following the date of the sale. If not so removed, a storage fee of \$5.00 per lot per day will be payable to us by the purchaser beginning at the close of the 21st day following the sale, and we may thereafter transfer such property to an offsite warehouse at the purchaser's risk and expense. Accounts must be settled in full before property will be released. Packing and handling of purchased lots are the responsibility of the purchaser. Bonhams can provide packing and shipping services for certain items as noted in the "Buyer's Guide" section of the catalog.

9. The copyright in the text of the catalog and the photographs, digital images and illustrations of lots in the catalog belong to Bonhams or its licensors. You will not reproduce or permit anyone else to reproduce such text, photographs, digital images or illustrations without our prior written consent.

10. These Conditions of Sale shall bind the successors and assigns of all bidders and purchasers and inure to the benefit of our successors and assigns. No waiver, amendment or modification of the terms hereof (other than posted notices or oral announcements during the sale) shall bind us unless specifically stated in writing and signed by us. If any part of these Conditions of Sale is for any reason invalid or unenforceable, the rest shall remain valid and enforceable.

11. These Conditions of Sale and the purchaser's and our respective rights and obligations hereunder are governed by the laws of the State of California. By bidding at an auction, each purchaser and bidder agrees to be bound by these Conditions of Sale. Any dispute, controversy or claim arising out of or relating to this agreement, or the breach, termination or validity thereof, brought by or against Bonhams (but not including claims brought against the consignor by the purchaser of lots consigned hereunder) shall be resolved by the procedures set forth below.

### MEDIATION AND ARBITRATION PROCEDURES

(a) Within 30 days of written notice that there is a dispute, the parties or their authorized and empowered representatives shall meet by telephone and/or in person to mediate their differences. If the parties agree, a mutually acceptable mediator shall be selected and the parties will equally share such mediator's fees. The mediator shall be a retired judge or an attorney familiar with commercial law and trained in or qualified by experience in handling mediations. Any communications made during the mediation process shall not be admissible in any subsequent arbitration, mediation or judicial proceeding. All proceedings and any resolutions thereof shall be confidential, and the terms governing arbitration set forth in paragraph (c) below shall govern.

(b) If mediation does not resolve all disputes between the parties, or in any event no longer than 60 days after receipt of the written notice of dispute referred to above, the parties shall submit the dispute for binding arbitration before a single neutral arbitrator. Such arbitrator shall be a retired judge or an attorney familiar with commercial law and trained in or qualified by experience in handling arbitrations. Such arbitrator shall make all appropriate disclosures required by law. The arbitrator shall be drawn from a panel of a national arbitration service agreed to by the parties, and shall be selected as follows: (i) If the national arbitration service has specific rules or procedures, those rules or procedures shall be followed; (ii) If the national arbitration service does not have rules or procedures for the selection of an arbitrator, the arbitrator shall be an individual jointly agreed to by the parties. If the parties cannot agree on a national arbitration service, the arbitration shall be conducted by the American Arbitration Association, and the arbitrator shall be selected in accordance with the Rules of

## CONDITIONS OF SALE - CONTINUED

the American Arbitration Association. The arbitrator's award shall be in writing and shall set forth findings of fact and legal conclusions.

(c) Unless otherwise agreed to by the parties or provided by the published rules of the national arbitration service:

(i) the arbitration shall occur within 60 days following the selection of the arbitrator;

(ii) the arbitration shall be conducted in the designated location, as follows: (A) in any case in which the subject auction by Bonhams took place or was scheduled to take place in the State of New York or Connecticut or the Commonwealth of Massachusetts, the arbitration shall take place in New York City, New York; (B) in all other cases, the arbitration shall take place in the city of San Francisco, California; and

(iii) discovery and the procedure for the arbitration shall be as follows:

(A) All arbitration proceedings shall be confidential;

(B) The parties shall submit written briefs to the arbitrator no later than 15 days before the arbitration commences;

(C) Discovery, if any, shall be limited as follows: (I) Requests for no more than 10 categories of documents, to be provided to the requesting party within 14 days of written request therefor; (II) No more than two (2) depositions per party, provided however, the deposition(s) are to be completed within one (1) day; (III) Compliance with the above shall be enforced by the arbitrator in accordance with California law;

(D) Each party shall have no longer than eight (8) hours to present its position. The entire hearing before the arbitrator shall not take longer than three (3) consecutive days;

(E) The award shall be made in writing no more than 30 days following the end of the proceeding. Judgment upon the award rendered by the arbitrator may be entered by any court having jurisdiction thereof.

To the fullest extent permitted by law, and except as required by applicable arbitration rules, each party shall bear its own attorneys' fees and costs in connection with the proceedings and shall share equally the fees and expenses of the arbitrator.

### LIMITED RIGHT OF RESCISSION

If within one (1) year from the date of sale, the original purchaser (a) gives written notice to us alleging that the identification of Authorship (as defined below) of such lot as set forth in the **BOLD TYPE** heading of the catalog description of such lot (as amended by any saleroom notices or verbal announcements during the sale) is not substantially correct based on a fair reading of the catalog (including the terms of any glossary contained therein), and (b) within 10 days after such notice returns the lot to us in the same condition as at the time of sale, and (c) establishes the allegation in the notice to our satisfaction (including by providing one or more written opinions by recognized experts in the field, as we may reasonably require), then the sale of such lot will be rescinded and, unless we have already paid to the consignor monies owed him in connection with the sale, the original purchase price will be refunded.

If, prior to receiving such notice from the original purchaser alleging such defect, we have paid the consignor monies owed him in connection with the sale, we shall pay the original purchaser the amount of our commissions, any other sale proceeds to which we are entitled and applicable taxes received from the purchaser on the sale and make demand on the consignor to pay the balance of the original purchase price to the original purchaser. Should the consignor fail to pay such amount promptly, we may disclose the identity of the consignor and assign to the original purchaser our rights against the consignor with respect to the lot the sale of which is sought to be rescinded. Upon such disclosure and assignment, any liability of Bonhams as consignor's agent with respect to said lot shall automatically terminate.

The foregoing limited right of rescission is available to the original purchaser only and may not be assigned to or relied upon by any subsequent transferee of the property sold. The purchaser hereby accepts the benefit of the consignor's warranty of title and other representations and warranties made by the consignor for the purchaser's benefit. Nothing in this section shall be construed as an admission by us of any representation of fact, express or implied, obligation or responsibility with respect to any lot. **THE PURCHASER'S SOLE AND EXCLUSIVE**

REMEDY AGAINST BONHAMS FOR ANY REASON WHATSOEVER IS THE LIMITED RIGHT OF RESCISSION DESCRIBED IN THIS SECTION.

"Authorship" means only the identity of the creator, the period, culture and source or origin of the lot, as the case may be, as set forth in the **BOLD TYPE** heading of the print catalog entry. The right of rescission does not extend to: (a) works of art executed before 1870 (unless these works are determined to be counterfeits created since 1870), as this is a matter of current scholarly opinion which can change; (b) titles, descriptions, or other identification of offered lots, which information normally appears in lower case type below the **BOLD TYPE** heading identifying the Authorship; (c) Authorship of any lot where it was specifically mentioned that there exists a conflict of specialist or scholarly opinion regarding the Authorship of the lot at the time of sale; (d) Authorship of any lot which as of the date of sale was in accordance with the then generally-accepted opinion of scholars and specialists regarding the same; or (e) the identification of periods or dates of creation in catalog descriptions which may be proven inaccurate by means of scientific processes that are not generally accepted for use until after publication of the catalog in which the property is offered or that were unreasonably expensive or impractical to use at the time of such publication.

### LIMITATION OF LIABILITY

EXCEPT AS EXPRESSLY PROVIDED ABOVE, ALL PROPERTY IS SOLD "AS IS." NEITHER BONHAMS NOR THE CONSIGNOR MAKES ANY REPRESENTATION OR WARRANTY, EXPRESS OR IMPLIED, AS TO THE MERCHANTABILITY, FITNESS OR CONDITION OF THE PROPERTY OR AS TO THE CORRECTNESS OF DESCRIPTION, GENUINENESS, ATTRIBUTION, PROVENANCE OR PERIOD OF THE PROPERTY OR AS TO WHETHER THE PURCHASER ACQUIRES ANY COPYRIGHTS OR OTHER INTELLECTUAL PROPERTY RIGHTS IN LOTS SOLD OR AS TO WHETHER A WORK OF ART IS SUBJECT TO THE ARTIST'S MORAL RIGHTS OR OTHER RESIDUAL RIGHTS OF THE ARTIST. THE PURCHASER EXPRESSLY ACKNOWLEDGES AND AGREES THAT IN NO EVENT SHALL BONHAMS BE LIABLE FOR ANY DAMAGES INCLUDING, WITHOUT LIMITATION, ANY COMPENSATORY, INCIDENTAL OR CONSEQUENTIAL DAMAGES.

## SELLER'S GUIDE

### SELLING AT AUCTION

Bonhams can help you every step of the way when you are ready to sell art, antiques and collectible items at auction. Our regional offices and representatives throughout the US are available to service all of your needs. Should you have any further questions, please visit our website at [www.bonhams.com/us](http://www.bonhams.com/us) for more information or call our Client Services Department at +1 (323) 850 7500.

### AUCTION ESTIMATES

The first step in the auction process is to determine the auction value of your property. Bonhams' world-renowned specialists will evaluate your special items at no charge and in complete confidence. You can obtain an auction estimate in many ways:

- Attend one of our Auction Evaluation Events held regularly at our galleries and in other major metropolitan areas. The updated schedule for Bonhams Auction Evaluation Events is available at [www.bonhams.com/us](http://www.bonhams.com/us).
- Call our Client Services Department to schedule a private appointment at one of our galleries. If you have a large collection, our specialists can travel, by appointment, to evaluate your property on site.
- Send clear photographs to us of each individual item, including item dimensions and other pertinent information with each picture. Photos should be sent to Bonhams' address in envelopes marked

as "photo auction estimate". Alternatively, you can submit your request using our online form at [www.bonhams.com/us](http://www.bonhams.com/us). Digital images may be attached to the form. Please limit your images to no more than five (5) per item.

### CONSIGNING YOUR PROPERTY

After you receive an estimate, you may consign your property to us for sale in the next appropriate auction. Our staff assists you throughout the process, arranging transportation of your items to our galleries (at the consignor's expense), providing a detailed inventory of your consignment, and reporting the prices realized for each lot. We provide secure storage for your property in our warehouses and all items are insured throughout the auction process. You will receive payment for your property approximately 35 days after completion of sale.

Sales commissions vary with the potential auction value of the property and the particular auction in which the property is offered. Please call us for commission rates.

### PROFESSIONAL APPRAISAL SERVICES

Bonhams' specialists conduct insurance and fair market value appraisals for private collectors, corporations, museums, fiduciaries and government entities on a daily basis. Insurance appraisals, used for insurance purposes, reflect the cost of replacing property in today's retail market. Fair market value appraisals are used for estate,

tax and family division purposes and reflect prices paid by a willing buyer to a willing seller.

When we conduct a private appraisal, our specialists will prepare a thorough inventory listing of all your appraised property by category. Valuations, complete descriptions and locations of items are included in the documentation.

Appraisal fees vary according to the nature of the collection, the amount of work involved, the travel distance, and whether the property is subsequently consigned for auction.

Our appraisers are available to help you anywhere and at any time. Please call our Client Services Department to schedule an appraisal.

### ESTATE SERVICES

Since 1865, Bonhams has been serving the needs of fiduciaries – lawyers, trust officers, accountants and executors – in the disposition of large and small estates. Our services are specially designed to aid in the efficient appraisal and disposition of fine art, antiques, jewelry, and collectibles. We offer a full range of estate services, ranging from flexible financial terms to tailored accounting for heirs and their agents to world-class marketing and sales support.

For more information or to obtain a detailed Trust and Estates package, please visit our website at [www.bonhams.com/us](http://www.bonhams.com/us) or contact our Client Services Department.

# BUYER'S GUIDE

## BIDDING & BUYING AT AUCTION

Whether you are an experienced bidder or an enthusiastic novice, auctions provide a stimulating atmosphere unlike any other. Bonhams previews and sales are free and open to the public. As you will find in these directions, bidding and buying at auction is easy and exciting. Should you have any further questions, please visit our website at [www.bonhams.com](http://www.bonhams.com) or call our Client Services Department at +1 (323) 850 7500.

### Catalogs

Before each auction we publish illustrated catalogs that include dates and times for previews and auctions. Our catalogs also provide descriptions and estimated values for each "lot." A lot may refer to a single item or to a group of items auctioned together. We offer our catalogs by subscription or by single copy. For information on subscribing to our catalogs, you may refer to the subscription form in this catalog, call our Client Services Department, or visit our website at [www.bonhams.com/us](http://www.bonhams.com/us).

### Previews

Auction previews are your chance to inspect each lot prior to the auction. We encourage you to look closely and examine each object on which you may want to bid so that you will know as much as possible about it. Items are sold "as is" and with all faults; illustrations in our catalogs, website and other materials are provided for identification only. At the previews, our staff is always available to answer your questions and guide you through the auction process. Condition reports may be available upon request.

### Estimates

Bonhams catalogs include estimates for each lot, exclusive of buyer's premium and tax. The estimates are provided as an approximate guide to current market value and should not be interpreted as a representation or prediction of actual selling prices. They are determined well in advance of a sale and are subject to revision. Please contact us should you have any questions about value estimates.

### Reserves

All lots in a catalog are subject to a reserve unless otherwise indicated. The reserve is the minimum price that the seller is willing to accept for a lot. This amount is confidential and does not exceed the low estimated value.

## BIDDING AT AUCTION

At Bonhams, you can bid in many ways: in person, via absentee bid, over the phone, or via Bonhams' online bidding facility. Absentee bids can be submitted in person, online, via fax or via email.

A valid Bonhams client account is required to participate in bidding activity. You can obtain registration information online, at the reception desk or by calling our Client Services Department.

By bidding at auction, whether in person or by agent, by absentee bid, telephone, online or other means, the buyer or bidder agrees to be bound by the Conditions of Sale.

Lots are auctioned in consecutive numerical order as they appear in the catalog. Bidding normally begins below the low estimate. The auctioneer will accept bids from interested parties present in the saleroom, from telephone bidders, and from absentee bidders who have left written bids in advance of the sale. The auctioneer may also execute bids on behalf of the consignor up to the amount of the reserve, but never above it.

We assume no responsibility for failure to execute bids for any reason whatsoever.

### In Person

If you are planning to bid at auction, you will need to register at the reception desk in order to receive a numbered bid card. To place a bid, hold up your card so that the auctioneer can clearly see it. Decide on the maximum amount that you wish to pay, exclusive of buyer's premium and tax, and continue bidding until your bid prevails or you reach your limit. If you are the successful bidder on a lot, the auctioneer will acknowledge your paddle number and bid amount.

### Absentee Bids

As a service to those wishing to place bids, we may at our discretion accept bids without charge in advance of sale by telephone, by facsimile or in writing on bidding forms available from us. "Buy" bids will not be accepted; all bids must state the highest bid price the bidder is willing to pay. Our auction staff will try to bid just as you would, with the goal of obtaining the

item at the lowest bid price possible. In the event identical bids are submitted, the earliest bid submitted will take precedence. Absentee bids shall be executed in competition with other absentee bids, any applicable reserve, and bids from other auction participants. A friend or agent may place bids on your behalf, provided that we have received your written authorization prior to the sale. Absentee bid forms are available in our catalogs, online at [www.bonhams.com/us](http://www.bonhams.com/us), and at our San Francisco, Los Angeles and New York galleries.

### By Telephone

Under special circumstances, we can arrange for you to bid by telephone. To arrange for a telephone bid, please contact our Client Services Department a minimum of 24 hours prior to the sale.

### Online

Web users may place absentee bids online from anywhere in the world. To bid online, please visit our website at [www.bonhams.com/us](http://www.bonhams.com/us).

We are pleased to make our live online bidding facility available to bidders in this sale.

Additional terms and conditions of sale relating to online bidding will apply. Please see [www.bonhams.com/24867](http://www.bonhams.com/24867) or contact the Client Services Department to obtain information and learn how you can register and bid online in this sale.

### Bid Increments

Bonhams generally uses the following increment multiples as bidding progresses:

\$50-200 .....	by \$10s
\$200-500 .....	by \$20/50/80s
\$500-1,000 .....	by \$50s
\$1,000-2,000 .....	by \$100s
\$2,000-5,000 .....	by \$200/500/800s
\$5,000-10,000 .....	by \$500s
\$10,000-20,000 .....	by \$1,000s
\$20,000-50,000 .....	by \$2,000/5,000/8,000s
\$50,000-100,000 .....	by \$5,000s
\$100,000-200,000 .....	by \$10,000s
above \$200,000 .....	at auctioneer's discretion

**The auctioneer may split or reject any bid at any time at his or her discretion as outlined in the Conditions of Sale.**

### Currency Converter

Solely for the convenience of bidders, a currency converter may be provided at Bonhams sales. The rates quoted for conversion of other currencies to U.S. Dollars are indications only and should not be relied upon by a bidder, and neither Bonhams nor its agents shall be responsible for any errors or omissions in the operation or accuracy of the currency converter.

### Buyer's Premium

A buyer's premium is added to the winning bid price of each individual lot purchased, at the rates set forth in the Conditions of Sale. The winning bid price plus the premium constitute the purchase price for the lot. Applicable sales taxes are computed based on this figure, and the total becomes your final purchase price.

Unless specifically illustrated and noted, fine art frames are not included in the estimate or purchase price. Bonhams accepts no liability for damage or loss to frames during storage or shipment.

All sales are final and subject to the Conditions of Sale found in our catalogs, on our website, and available at the reception desk.

### Payment

All buyers are asked to pay and pick up by 3pm on the business day following the auction. Payment may be made to Bonhams by cash, checks drawn on a U.S. bank, money order, wire transfer, or by Visa, MasterCard, American Express or Discover credit or charge card or debit card. All items must be paid for within 5 business days of the sale. Please note that payment by personal or business check may result in property not being released until purchase funds clear our bank.

### Sales Tax

Residents of states listed in Paragraph 1 of the Conditions of Sale must pay applicable sales tax. Other state or local taxes (or compensation use taxes) may apply. Sales tax will be automatically added to the invoice unless a valid resale number has been furnished or the property is shipped via common carrier to destinations outside the states listed in

the Conditions of Sale. If you wish to use your resale license please contact Cashiers for our form.

### Shipping & Removal

Bonhams can accommodate shipping for certain items. Please contact our Cashiers Department for more information or to obtain a quote. Refer to Conditions of Sale for special terms governing the shipment of Arms and Wine. Shipments are made during weekday business hours up to four weeks after payment is received. Carriers are not permitted to deliver to P.O. Boxes.

International buyers are responsible for all import/export customs duties and taxes. An invoice stating the actual purchase price(s) will accompany all international purchases.

### Simultaneous sale property collection notice:

If this sale previews in multiple cities, please see the title page for details regarding final location of property for collection.

### Auction Results

Auction results are usually available on the next business day following the sale or online at [www.bonhams.com/us](http://www.bonhams.com/us).



## CONTACTS

### OFFICERS

Malcolm Barber  
Co-Chairman

Matthew Girling  
Chief Executive Officer

Laura King Pfaff •  
Chairman Emeritus

Leslie Wright  
Deputy Chairman Vice President,  
Trusts and Estates

Vice Presidents, Specialists

Rupert Banner  
Mark Fisher  
Dessa Goddard  
Jakob Greisen  
Bruce MacLaren  
Scot Levitt  
Mark Osborne  
Brooke Sivo  
Catherine Williamson

### REPRESENTATIVES

#### Arizona

Terri Adrian-Hardy, (602) 859 1843

#### California

David Daniel  
(916) 364 1645, Central Valley

#### California

Brooke Sivo  
(760) 350 4255, Palm Springs  
(760) 567 1744, San Diego

#### Chicago

Natalie Waechter, (312) 972 2719

#### Colorado

Lance Vigil  
(720) 355 3737, Denver

#### Florida

April Matteini, (305) 978 2459  
Alexis Cronin Butler, (305) 878 5366

#### Georgia

Mary Moore Bethea, (404) 842 1500 •

#### Illinois

Ricki Harris  
(773) 267 3300, (773) 680 2881

#### Massachusetts/New England

Amy Corcoran, (617) 742 0909

#### Nevada

David Daniel, (775) 831 0330

#### New Mexico

Terri Adrian-Hardy, (602) 859 1843

#### Oregon and Idaho

Sheryl Acheson, (971) 727 7797

#### Texas, Oklahoma and Louisiana

Amy Lawch, (713) 621 5988 •

#### Virginia and Washington DC

##### Mid-Atlantic Region

Gertraud Hechl, (202) 422 2733 •

#### Washington

Heather O'Mahony, (206) 566 3913

#### Canada, Toronto, Ontario

Kristin Kearney, (416) 462 9004 •

#### Montreal, Quebec

David Kelsey, (514) 894 1138 •

### BONHAMS \*

#### NEW YORK DEPARTMENTS

580 Madison Avenue  
New York, New York 10022  
(212) 644 9001

#### Books & Manuscripts

Ian Ehling, (212) 644 9094  
Darren Sutherland, (212) 461 6531

#### Chinese Works of Art & Paintings

Bruce MacLaren, (917) 206 1677  
Ming Hua, (646) 837 8132  
Harold Yeo, (917) 206 1628 •

#### Collectors' Motorcars & Motorcycles

Rupert Banner, (212) 461 6515  
Eric Minoff, (917) 206 1630  
Evan Ide, (917) 340 4657  
Michael Caimano, (917) 206 1615

#### American Art

Jennifer Jacobsen, (917) 206 1699  
Elizabeth Goodridge, (917) 206 1621

#### Contemporary Art

Jeremy Goldsmith, (917) 206 1656

#### European Paintings

Madalina Lazen, (212) 644 9108

#### Impressionist & Modern Art

Caitlyn Pickens, (212) 644 9135

#### Himalayan Art

Mark Rasmussen, (917) 206 1688

#### Japanese Works of Art

Jeff Olson, (212) 461 6516

#### Jewelry

Caroline Morrissey, (212) 644 9046  
Camille Barbier, (212) 644 9035

#### Modern Decorative Arts & Design

Benjamin Walker, (212) 710 1306  
Dan Tolson, (917) 206 1611

#### Photographs

Laura Paterson, (917) 206 1653

#### Prints and Multiples

Deborah Ripley, (212) 644 9059

#### Russian Fine & Decorative Arts

Yelena Harbick, (212) 644 9136

#### Trusts & Estates

Sherri Cohen, (917) 206 1671

#### Watches & Clocks

Jonathan Snellenburg, (212) 461 6530

### CLIENT SERVICES DEPARTMENT

#### San Francisco

(415) 861 7500  
(415) 861 8951 fax

Monday - Friday, 9am to 5pm

#### Los Angeles

(323) 850 7500  
(323) 850 6090 fax

Monday - Friday, 9am to 5pm

### BONHAMS \*

#### SAN FRANCISCO DEPARTMENTS

220 San Bruno Avenue  
San Francisco California 94103  
(415) 861 7500

#### 20th Century Fine Art

Sonja Moro, (415) 503 3412

#### Books & Manuscripts

Adam Stackhouse, (415) 503 3266

#### Chinese Works of Art

Dessa Goddard, (415) 503 3333  
Henry Kleinhenz, (415) 503 3336  
Daniel Herskee, (415) 503 3271  
Lingling Shang, (415) 503 3207 •  
Amelia Chao, (415) 503 3397

#### Furniture & Decorative Arts

Caroline Cole, (415) 503 3400

#### Jewelry & Watches

Shannon Beck, (415) 503 3306

#### Collectors' Motorcars & Motorcycles

Mark Osborne, (415) 503 3353  
Jakob Greisen, (415) 503 3284

#### Museum Services

Laura King Pfaff, (415) 503 3210

#### Native American Art

Ingmars Lindbergs, (415) 503 3393

#### California & Western

##### Paintings & Sculpture

Aaron Bastian, (415) 503 3241

#### Prints & Photographs

Morisa Rosenberg, (415) 503 3259

#### Space History

Adam Stackhouse, (415) 503 3266

#### Wine

Erin McGrath, (415) 503 3319

#### Trusts & Estates

Victoria Richardson, (415) 503 3207  
Celeste Smith, (415) 503 3214

### BONHAMS \*

#### LOS ANGELES DEPARTMENTS

7601 W. Sunset Boulevard  
Los Angeles California 90046  
(323) 850 7500

#### 20th Century Decorative Arts & Design

Angela Past, (323) 436 5422  
Jason Stein, (323) 436 5466

#### Post-War & Contemporary Art

Alexis Chompaisal, (323) 436 5469

#### Asian Works of Art

Rachel Du, (323) 436 5587

#### African, Oceanic & Pre-Columbian Art

Fredric W. Backlar, (323) 436 5416 •

#### Books & Manuscripts

Catherine Williamson, (323) 436 5442

#### Coins & Banknotes

Paul Song, (323) 436 5455

#### Impressionist & Modern Art

Kathy Wong, (323) 436 5415

#### Entertainment Memorabilia

Catherine Williamson, (323) 436 5442  
Dana Hawkes, (978) 283 1518

#### Jewelry & Watches

Dana Ehrman, (323) 436 5407  
Alexis Vourvoulis, (323) 436 5483

#### Collectors' Motorcars & Motorcycles

Michael Caimano, (929) 666 2243

#### Prints & Photographs

Morisa Rosenberg, (323) 436 5435

#### Natural History

Thomas E. Lindgren, (310) 469 8567 •  
Claudia Florian, G.J.G., (323) 436 5437 •

#### California & Western

##### Paintings & Sculpture

Scot Levitt, (323) 436 5425  
Kathy Wong, (323) 436 5415

#### European Paintings

Mark Fisher, (323) 436 5488  
Rocco Rich, (323) 436 5410

#### Trusts & Estates

Leslie Wright, (323) 436 5408  
Joseph Francaviglia, (323) 436 5443

\* Indicates saleroom  
• Indicates independent contractor

# Auction Registration Form

(Attendee / Absentee / Online / Telephone Bidding)

Please circle your bidding method above.

--	--	--	--

**Paddle number (for office use only)**

**General Notice:** This sale will be conducted in accordance with Bonhams Conditions of Sale, and your bidding and buying at the sale will be governed by such terms and conditions. Please read the Conditions of Sale in conjunction with the Buyer's Guide relating to this sale and other published notices and terms relating to bidding. Payment by personal or business check may result in your property not being released until purchase funds clear our bank. Checks must be drawn on a U.S. bank.

**Notice to Absentee Bidders:** In the table below, please provide details of the lots on which you wish to place bids at least 24 hours prior to the sale. Bids will be rounded down to the nearest increment. Please refer to the Buyer's Guide in the catalog for further information relating to instructions to Bonhams to execute absentee bids on your behalf. Bonhams will endeavor to execute bids on your behalf but will not be liable for any errors or non-executed bids.

**Notice to First Time Bidders:** New clients are requested to provide photographic proof of ID - passport, driving license, ID card, together with proof of address - utility bill, bank or credit card statement etc. Corporate clients should also provide a copy of their articles of association / company registration documents, together with a letter authorizing the individual to bid on the company's behalf. Failure to provide this may result in your bids not being processed. For higher value lots you may also be asked to provide a bankers reference.

**Notice to online bidders;** If you have forgotten your username and password for [www.bonhams.com](http://www.bonhams.com), please contact Client Services.

**If successful**

- I will collect the purchases myself
- Please contact me with a shipping quote (if applicable)
- I will arrange a third party to collect my purchase(s)

**Please email or fax the completed Registration Form and requested information to:**

Bonhams Client Services Department  
7601 W. Sunset Blvd  
Los Angeles, California 90046  
Tel +1 (323) 850 7500  
Fax +1 (323) 850 6090  
bids.us@bonhams.com

# Bonhams

Sale title: California Jewels		Sale date: Monday November 19, 2018	
Sale no. 24867		Sale venue: Los Angeles	
<b>General Bid Increments:</b>			
\$10 - 200 .....by 10s		\$10,000 - 20,000 .....by 1,000s	
\$200 - 500 .....by 20 / 50 / 80s		\$20,000 - 50,000 .....by 2,000 / 5,000 / 8,000s	
\$500 - 1,000 .....by 50s		\$50,000 - 100,000 .....by 5,000s	
\$1,000 - 2,000 .....by 100s		\$100,000 - 200,000 .....by 10,000s	
\$2,000 - 5,000 .....by 200 / 500 / 800s		above \$200,000 .....at the auctioneer's discretion	
\$5,000 - 10,000 .....by 500s		The auctioneer has discretion to split any bid at any time.	
Customer Number		Title	
First Name		Last Name	
Company name (to be invoiced if applicable)			
Address			
City		County / State	
Post / Zip code		Country	
Telephone mobile		Telephone daytime	
Telephone evening		Fax	
Telephone bidders: indicate primary and secondary contact numbers by writing ① or ② next to the telephone number.			
E-mail (in capitals) _____			
By providing your email address above, you authorize Bonhams to send you marketing materials and news concerning Bonhams and partner organizations. Bonhams does not sell or trade email addresses.			
I am registering to bid as a private client <input type="checkbox"/>		I am registering to bid as a trade client <input type="checkbox"/>	
Resale: please enter your resale license number here _____ We may contact you for additional information.			

SHIPPING	
Shipping Address (if different than above):	
Address: _____	Country: _____
City: _____	Post/ZIP code: _____

**Please note that all telephone calls are recorded.**

Type of bid (A-Absentee, T-Telephone)	Lot no.	Brief description (In the event of any discrepancy, lot number and not lot description will govern.) If you are bidding online there is no need to complete this section.	MAX bid in US\$ (excluding premium and applicable tax) Emergency bid for telephone bidders only*

**You instruct us to execute each absentee bid up to the corresponding bid amount indicated above.**

\* Emergency Bid: A maximum bid (exclusive of Buyer's Premium and tax) to be executed by Bonhams only if we are unable to contact you by telephone or should the connection be lost during bidding.

BY SIGNING THIS FORM YOU AGREE THAT YOU HAVE READ AND UNDERSTAND OUR CONDITIONS OF SALE AND SHALL BE LEGALLY BOUND BY THEM, AND YOU AGREE TO PAY THE BUYER'S PREMIUM, ANY APPLICABLE TAXES, AND ANY OTHER CHARGES MENTIONED IN THE BUYER'S GUIDE OR CONDITIONS OF SALE. THIS AFFECTS YOUR LEGAL RIGHTS.	
Your signature: _____	Date: _____







**Bonhams**  
7601 W. Sunset Boulevard  
Los Angeles, California 90046

---

+1 323 850 7500  
bonhams.com

**AUCTIONEERS SINCE 1793**